

Spare Parts List ELENBERG 1403 (K14SA208A)

№	Part Number	Description
1	12001175	*DEGAUSSING COILBKK37B-40T4D0.44-1065/A
2	26000092	CRT CONNECTOR ZJ101802-0D1
3	26000314	FOUR-PIN CONNECTOR 11-4T04/T00-410
4	26000383	TWO-PIN CONNECTOR 02-2T01/T00-487(280)
5	26004354	TWO-PIN CONNECTOR 02-2T01/T00-360
6	28000094	*SHRINK PLASTIC SLEEVEΦ3.5-125℃BLA/U.C
7	29000871	SPEAKER YDT310N-4B-16Ω/3W
8	31003336	*CRT-37SX110Y22-DC15(A)-X-01-CAIHONG/A
9	33000365	BATTERY RO3P-AAA-10.2X44.5 1.5V
10	36000720	*BRACKET 229*371501-01 T3731E1
11	36002115	*RUBBER PAD 334*371601-01
12	36003210	*WIRE TIE 680*101261-01R
13	36003213	*WIRE TIE 680*125503-01R
14	36003216	*SEPARATE RING 680*392101-00
15	36004141	*FELT PAPER 531-150010-05
16	36006216	*WASHER KK8.942.010-Φ8.2×Φ22×2.3
17	36014984	*AC LINE CORE CLIP 254*000210/00-F
18	36021313	BRACKET229*K147310/100C
19	36022688	* PLATE384*T29SK06810/01
20	36023711	*LENS 263*K140820/101J
21	36025334	*STUD 250*T2563E11/100G
22	36031552	FRONT CABINET 200*K140810/109A
23	36031554	*PVC PLATE 388*K140810/103
24	36031555	*POWER BUTTON 292*K140810/103D
25	36031556	*FUNCTION PRESSBUTTON 291*K140810/104D
26	36031557	*LENS 263*K140810/103D
27	36032463	BACK CABINET 202*K140712/101B
28	36034473	PLATE384*K14SA208A10/00
29	37000403	*WIRE CLIP 451*701201-01
30	37000425	*SWITCH SPRING 477*212802-01
31	37000441	*CRT SPRING 477*371601-01
32	37011010	NAME PLATE 401*15寸Elenberg10/02
33	38000081	*TAPPING SCREW P-ST3×10-Zn-FT-H 优
34	38000098	*TAPPING SCREW P-ST3×12-Zn-C
35	38000174	*TAPPING SCREW B-ST4×20-O-FT-H
36	38000190	*TAPPING SCREW B-ST4×25-O-FT-H
37	38000197	*TAPPING SCREW W-ST3×8-Zn-FT
38	38000218	*TAPPING SCREW W-ST3×10-Zn-C
39	38000252	*TAPPING SCREW B-ST5×30-Zn-C-H
40	39000255	*POLYBAG 310*280-K180-0.04/2
41	39002596	*BIG BUBBLE SHEET W 1M , 1ROLL=45M
42	39005395	PACKING BAG310*800-K800-0.04/4
43	39009009	*CARDBOARD512*350-340-双
44	39012459	*CARTON BOX 510*K147330/00
45	39012460	*CARTON BOX 510*K147340/00
46	39021190	*POLYFOAM300*SKD33024510/01
47	39022214	CARTON BOX 510*140310/01-ELENBERG
48	39022215	MANUAL570*1403/01-ELENBERG二合一
49	39022305	WARRANTY CARD 901*157010/01-ELENBERG
50	41000086	*QC LABEL 569*018101-10
51	41001864	*SERIAL LABEL 569*380501-06
52	41003843	*SERIAL BAR CODE LABEL 569*2004001/01
53	41005756	*LABEL 569*装箱清单10/03
54	K14SA208ASKD-00	K14SA208A CHASSIS ASSEMBLY GENERAL
55	K14SA208AZZ-00	K14SA208A ASSEMBLY PARTS GENERAL
56	K14SA208AZZ-04	K14SA208A ASSEMBLY PARTS SPECICAL
57	K14SA208AZZ-RU	K14SA208A ASSEMBLY PARTS GENERAL
58	KK-Y294F	REMOTE HANDSET KK-Y294F

KONKA GROUP CO, LTD

Process Document

Volume One

Total Volumes: One

Total Pages: 23

Product Name 14"Color Television Set

Product Model K14SA208A

Contents: Final Assemble

Approved by : chenguojing

Year Month Date
2007.01.04

[illegible]

					Prepared by	Andy	2007-1-4	K14SA208A-G LC	
					Checked by	Pengxiao hua	2007-1-4		
					Standardized by	Chenzaiz ai	2007-1-4	Edition	0
Changing Marks	Quantity	Changing Sheet No.	Signature	Date	Approved by	Chenguo jing	2007-1-5	Page 1 Total Pages 1	

[illegible]

[illegible]

14"Color Television Set

K14SA208A

[illegible]

K14SA208A-G
GM

Edition	0
---------	---

Edition	0
---------	---

Page	1
Total Pages	1

KONKA GROUP CO, LTD Process Document	Product Name	14"Color Television Set
	Product Type	K14SA208A

14"Color Television Set

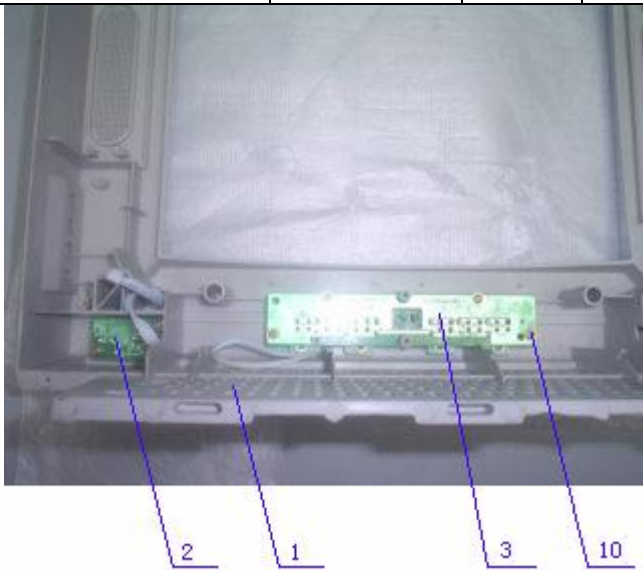
K14SA208A

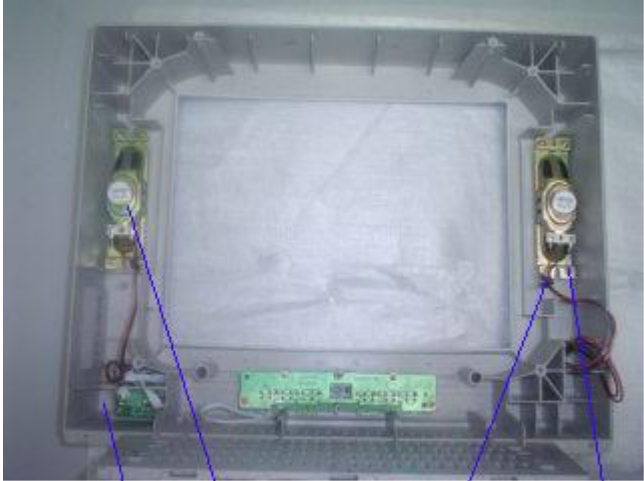
Auxiliary Materials Process Consumption Quota Summary Sheet

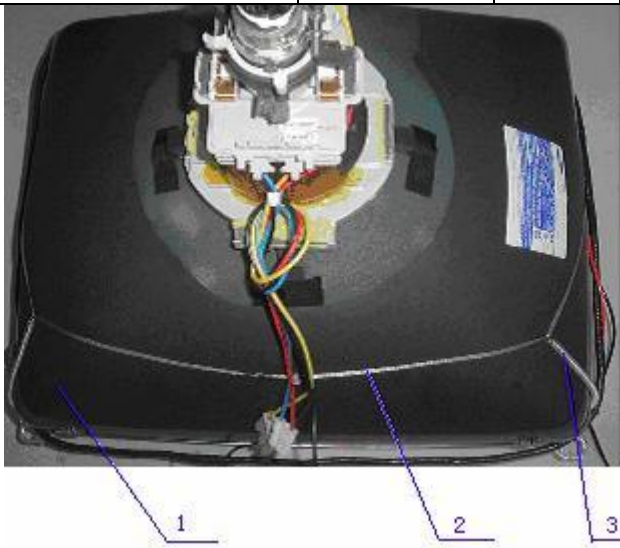
[illegible]

KONKA GROUP CO, LTD Process Document					Product Name	14"Color Television Set		
					Product Type	K14SA208A		
Assembly Process Card (1)					Procedure Name	Whole Machine Assembly		
					Procedure No.	1		
No.	Material Name	Serial No. (P/N)	Quantity	Location	Procedure Contents and Requirements			
1	Front Cabinet	36031552	1		1、Fix Lens into the front cabinet with tapping screw 38000218. 2、Assemble power buttons, switch spring and power lens then fix it into the front cabinet. 3、Spread nameplate with black glue then mount nameplate onto the specific location of the front cabinet fixedly and evenly, no deflection allowed.			
2	Nameplate	37011010	1					
3	Lens	36023711	1					
4	Tapping Screw	38000218	1					
5	Switch Spring	37000425	1					
6	Power Buttons	36031555	1					
7	Power Lens	36031557	1					
8	Tapping Screw	38000081	2					
9	PVC plate	36031554	1					
10	Black Glue		1g					

Frock and Tools								Work-type	
								Man-hour	
					Prepared by	Andy	2007-1-4	K14SA208A-GZ P	
					Checked by	Pengxiao hua	2007-1-4		
					Standardized by	Chenzaiz ai	2007-1-4		
Changing Marks	Quantity	Changing Sheet No.	Signature	Date	Approved by	Chenguo jing	2007-1-5	Page 1	Total Pages 10

KONKA GROUP CO, LTD Process Document					Product Name	14"Color Television Set			
					Product Type	K14SA208A			
Assembly Process Card (1)					Procedure Name	Whole Machine Assembly			
					Procedure No.	2			
No.	Material Name	Serial No. (P/N)	Quantity	Location	Procedure Contents and Requirements				
1	Front Cabinet		1		1. Fix Function Button with tapping screw 38000081. 2. Fix Control Board and Key Board Ass'y with tapping screw 38000201. 3. Fix Power Switch Ass'y with tapping screw 38000201. 4. Assemble aside AV board and bracket and adhibit aside AV plate then mount their ass'y into the specific locations of the front cabinet and fix with tapping screw 38000201. Torque force of screw >0. 5N.m.				
2	Remote Control Receiving Board	35007055	1						
3	Key Board Ass'y	35007075	1						
4	Function Button	36031556	2						
5	Power Switch Ass'y		1						
6	Aside AV Board	35006818	1						
7	Aside AV Plate	36022688	1						
10	Tapping Screw	38000218	10						
									
Frock and Tools							Work-type		
							Man-hour		
					Prepared by	Andy	2007-1-4	K14SA208A-GZ P	
					Checked by	Pengxiao hua	2007-1-4		
					Standardized by	Chenzaiz ai	2007-1-4		Edition
Changing Marks	Quantity	Changing Sheet No.	Signature	Date	Approved by	Chenguo jing	2007-1-5	Page 2	Total Pages 10

KONKA GROUP CO, LTD Process Document					Product Name		14"Color Television Set		
					Product Type		K14SA208A		
Assembly Process Card (1)					Procedure Name		Complete Machine Assembly		
					Procedure No.		3		
No.	Material Name	Serial No. (P/N)	Quantity	Location	Procedure Contents and Requirements				
1	F/C Ass'y		1		1. Mount the speaker parts and components on the left and right side of the front cabinet. Install wire clip at the screws on lower inner corners, and tight up the screws. 2. Fix Bracket at the bottom of the front cabinet with tapping screw. Torque force of screw > 0.6N.m				
2	Speaker Ass'y		1						
3	Tapping Screw	38000218	12						
4	Shrinkable Tube	28000094	8cm						
5	Wire clip	37000403	2						
6	BRACKET	36021313	2						
									
Frock and Tools		One Pneumatic Screwdriver						Work-type	
								Man-hour	
					Prepared by	Andy	2007-1-4	K14SA208A-GZ P	
					Checked by	Pengxiao hua	2007-1-4		
					Standardized by	Chenzaiz ai	2007-1-4		
Changing Marks	Quantity	Changing Sheet No.	Signature	Date	Approved by	Chenguo jing	2007-1-5	Page 3	Total Pages 10

KONKA GROUP CO, LTD Process Document					Product Name		14"Color Television Set		
					Product Type		K14SA208A		
Assembly Process Card (1)					Procedure Name		Complete Machine Assembly		
					Procedure No.		4		
No.	Material Name	Serial No. (P/N)	Quantity	Location	Procedure Contents and Requirements				
1	CRT	31003336	1		1、Put CRT on a flat-form; 2、Suspend one side of CRT Connector from a metal ear of CRT upside and suspend the other side from CRT spring, which hook the hole of that diagonal metal ear of the CRT.				
2	CRT CONNECTOR	26000092	1						
3	CRT SPRING	37000441	1						
									
Frock and Tools		One Air Pressure Gun						Work-type	
								Man-hour	
					Prepared by	Andy	2007-1-4	K14SA208A-GZ P	
					Checked by	Pengxiao hua	2007-1-4		
					Standardized by	Chenzaiz ai	2007-1-4		
Changing Marks	Quantity	Changing Sheet No.	Signature	Date	Approved by	Chenguo jing	2007-1-5	Page 4	Total Pages 10

KONKA GROUP CO, LTD Process Document					Product Name	14"Color Television Set			
					Product Type	K14SA208A			
Assembly Process Card (1)					Procedure Name	Whole Machine Assembly			
					Procedure No.	5			
No.	Material Name	Serial No. (P/N)	Quantity	Location	Procedure Contents and Requirements				
1	FRONT CABINET		1		1. Set the washer on the front cabinet; 2. Put CRT in the front cabinet; Set bracket on the four ears of the CRT; 3. Keep bracket clip the degaussing coil and Fix CRT parts and Components with tapping screw onto the front cabinet. Torque force of screw >2.0N.m.				
2	WASHER	36006216	4						
3	CRT GOUPWARE		1						
4	BRACKET	36000720	4						
5	DEGAUSSING COIL	12001175	1						
6	TAPPING SCREW	38000252	4						
Frock and Tools							Work-type		
							Man-hour		
					Prepared by	Andy	2007-1-4	K14SA208A-GZ P	
					Checked by	Pengxiao hua	2007-1-4		
					Standardized by	Chenzaiz ai	2007-1-4		Edition
Changing Marks	Quantity	Changing Sheet No.	Signature	Date	Approved by	Chenguo jing	2007-1-5	Page 5 Total Pages 10	

KONKA GROUP CO, LTD Process Document					Product Name		14"Color Television Set		
					Product Type		K14SA208A		
Assembly Process Card (1)					Procedure Name		Complete Machine Assembly		
					Procedure No.		6		
No.	Material Name	Serial No.(P/N)	Quantity	Location	Procedure Contents and Requirements				
1	FRONT CABINET		1		1、 Solder the four-pin connector to the DY; 2、 Insert the stud to the designed hole of main PCB board bottom; 3、 Dust and dirt around high-voltage cap and high-voltage nozzle should be blown off with air blower.; Set separate ring at proper position of the high voltage cable to keep the high voltage cable away from DY coil. 4、 Insert the CRT connector to XS501 and fix it with gray glue; Insert CRT board into the CRT.				
2	FOUR-PIN CONNECTOR	26000314	1						
3	CHASSIS GROUPWARE		1						
4	SEPARATE RING	36003216	1						
5	STUD	36030817	1						
Frock and Tools								Work-type	
								Man-hour	
					Prepared by	Andy	2007-1-4	K14SA208A-GZ P	
					Checked by	Pengxiao hua	2007-1-4		
					Standardized by	Chenzaiz ai	2007-1-4	Edition	0
Changing Marks	Quantity	Changing Sheet No.	Signature	Date	Approved by	Chenguo jing	2007-1-5	Page 6 Total Pages 10	

KONKA GROUP CO, LTD Process Document					Product Name		14"Color Television Set		
					Product Type		K14SA208A		
Assembly Process Card (1)					Procedure Name		Complete Machine Assembly		
					Procedure No.		7		
No.	Material Name	Serial No.(P/N)	Quantity	Location	Procedure Contents and Requirements				
1	FRONT CABINET		1		1、 Insert DY coil plug into XS401. 2、 Insert speaker connector into XS203 and XS204, earphone wire into XS201. 3、 Insert degaussing coil connector into XS902;. 4、 Insert key board connector、 side AV wire connector; 5、 Tie the wires proportionally.				
2	WIRE TIE	36003210	3						
Frock and Tools		One Electric Soldering Iron						Work-type	
								Man-hour	
					Prepared by	Andy	2007-1-4	K14SA208A-GZ P	
					Checked by	Pengxiao hua	2007-1-4		
					Standardized by	Chenzaiz ai	2007-1-4	Edition	0
Changing Marks	Quantity	Changing Sheet No.	Signature	Date	Approved by	Chenguo jing	2007-1-5	Page 7 Total Pages 10	

KONKA GROUP CO, LTD Process Document					Product Name		14"Color Television Set			
					Product Type		K14SA208A			
Assembly Process Card (1)					Procedure Name		Whole Machine Assembly			
					Procedure No.		8			
No.	Material Name	Serial No. (P/N)	Quantity	Location	Procedure Contents and Requirements					
1	BACK CABINET	36032463	1		1、 Stick the felt paper on the edge of the back cabinet; 2、 Mount the bracket in the designated position of the back cabinet; 3、 Stick plate.					
2	FELT PAPER	36004141	8							
3	BRACKET	36021313	2							
4	TAPPING SCREW	38000218	2							
5	MODEL PLATE		1							
6	PLATE	36034473	1							
Frock and Tools								Work-type		
								Man-hour		
					Prepared by	Andy	2007-1-4	K14SA208A-GZ P		
					Checked by	Pengxiao hua	2007-1-4			
					Standardized by	Chenzaiz ai	2007-1-4	Edition	0	
Changing Marks	Quantity	Changing Sheet No.	Signature	Date	Approved by	Chenguo jing	2007-1-5	Page 8 Total Pages 10		

KONKA GROUP CO, LTD Process Document				Product Name		14"Color Television Set			
				Product Type		K14SA208A			
Assembly Process Card (1)				Procedure Name		Complete Machine Packaging			
				Procedure No.		9			
No.	Material Name	Serial No. (P/N)	Quantity	Location	Procedure Contents and Requirements				
1	FRONT CABINET		1		1、Mount the back cabinet onto the front cabinet; clip the power cord with clip 36014984; 2、Fix the cabinet with tapping screw 38000190 and 38000174; fix the back terminal with the tapping screw 38000098; 3、Stick the labels or plates on the designated position; 4、Fold the AC line core then pack it.				
2	AC LINE CORE CLIP	36014984	1						
3	BACK CABINET		1						
4	TAPPING SCREW	38000190	2	top					
5	TAPPING SCREW	38000174	2	bottom					
6	TAPPING SCREW	38000098	2						
7	QC LABEL	41000086	1						
Frock and Tools								Work-type	
								Man-hour	
					Prepared by	Andy	2007-1-4	K14SA208A-GZ P	
					Checked by	Pengxiao hua	2007-1-4		
					Standardized by	Chenzaiz ai	2007-1-4	Edition	0
Changing Marks	Quantity	Changing Sheet No.	Signature	Date	Approved by	Chenguo jing	2007-1-5	Page 9	Total Pages 10

KONKA GROUP CO, LTD Process Document				Product Name		14"Color Television Set			
				Product Type		K14SA208A			
Assembly Process Card (1)				Procedure Name		Complete Machine Packaging			
				Procedure No.		10			
No.	Material Name	Serial No. (P/N)	Quantity	Location	Procedure Contents and Requirements				
1	POLYBAG	39000255	1		1. Put warranty card, remote handset and manual and battery etc into plastic bag; 2. Shape the carton; package the TV with the packing bag and carton box; 3. Stick carton label and bar code label on the proper location of the carton.				
2	WARRANTY CARD	39022305	1						
3	REMOTE HANDSET	KK-Y294F	1						
4	MANUAL	39022215	1						
5	BATTERY	33000365	2						
6	CARTON BOX	39022214	1						
7									
8	TV		1						
9	PACKINGBAG	39005395	1						
10	POLYFOAM (UP)		1						
11	POLYFOAM (DOWN)		1						
12									
Frock and Tools								Work-type	
								Man-hour	
					Prepared by	Andy	2007-1-4	K14SA208A-GZ P	
					Checked by	Pengxiao hua	2007-1-4		
					Standardized by	Chenzaiz ai	2007-1-4		
Changing Marks	Quantity	Changing Sheet No.	Signature	Date	Approved by	Chenguo jing	2007-1-5	Page 10	Total Pages 10

KONKA GROUP CO, LTD Process Document					Product Name		14" Color Television Set	
					Product Type		K14SA208A	
Adjustment Process Card					Procedure Name		Chassis Adjustment	
					Chart No.		K14SA208A-TS	
Adjustment Items			Power Supply and filament voltage adjustment		Oscillogram and meter connection			
Power Supply and Voltage adjustment 1. Check AC voltage is normal or not, AC220V, 50Hz. 2. Receive Television broadcast signal, adjust Brightness and Contrast until the standard picture is obtained. 3. Adjust RP950 until voltage between cathode of VD950 and GND of chassis is $108V \pm 0.5V$. (Detail voltage please see B/M) High Voltage check Connect normal AC voltmeter between R406 (the side to CRT) and GND, and measure the filament voltage may be $6.3V \pm 0.25V$ (refer to the BOM for the voltage range of the special CRT) .								
Apparatus and Tools		GDM-8145 Digital voltmeter×1 , DC Power Supplier X2,						
		Adjustment Screwdriver X1, PHILIP Pattern Signal Generator (5820)						
					Prepared by	Andy	2007-1-4	
					Checked by	Pengxiaohua	2007-1-4	
					Standardized by	Chenzaizai	2007-1-4	Version
Changing Marks	Quantity	Changing Sheet No.	Signature	Date	Approved by	Chenguojing	2007-1-5	Page1 of 5

KONKA GROUP CO, LTD Process Document					Product Name		14" Color Television Set		
					Product Type		K14SA208A		
Adjustment Process Card					Procedure Name		Chassis Adjustment		
					Chart No.		K14SA208A-TS		
Adjustment Items			Focus adjustment		Oscillogram and meter connection				
1. Elect CROSSHATCH and DOT signal, then set PICTURE to STANDARD mode; 2. Adjust FOCUS to make the picture on the CRT is the clearest.									
Apparatus and Tools		Remote handset KK-Y94F							
		PM5418							
					Prepared by	Andy	2007-1-4		
					Checked by	Pengxiaohua	2007-1-4		
					Standardized by	Chenzaizai	2007-1-4		Version
Changing Marks	Quantity	Changing Sheet No.	Signature	Date	Approved by	Chenguojin g	2007-1-5	Page 2 of 5	

KONKA GROUP CO, LTD Process Document					Product Name		14" Color Television Set		
					Product Type		K14SA208A		
Adjustment Process Card					Procedure Name		Chassis Adjustment		
					Chart No.		K14SA208A-TS		
Adjustment Items			White balance adjustment		Oscillogram and meter connection				
<p>White balance and sub-brightness adjustment</p> <p>Note: BLUE BACK must be turned off and factory menu must be ON before placing the set with aging test.</p> <p>1 Set Unit to AV, and set the picture to standard mode.</p> <p>2 Enter FACTORY MENU 00, press P+ or P- button to choose V-KILL, then press V+ button to display horizontal light line on the screen, adjust SCREEN potentiometer so that the horizontal light line just displays anyone color of R,G and B, press V- button to restore the screen.</p> <p>3 Input left black and right white signal for white balance adjustment.</p> <p>4 Insert I²C controller plug which is used for automatic adjustment system into XS600 socket on the main board.</p> <p>5 Turn on color analyzer CA100 to make zero correction.</p> <p>6 Run the program (WB76931.exe)</p> <p>7 Press "SPACE" key or press switch on the controller socket, white balance adjustment will be operated automatically. If OK, "Click" will be heard.</p> <p>8 Pull out I²C controller plug from XS600, receive black-white NTSC five circles pattern signal, and set the picture to standard mode.</p> <p>9. Enter FACTORY MENU 00, adjust sub-brightness until black-white gray scale is 7~7.5.</p>									
Apparatus and Tools		White Balance Adjust Computer, 2842C、Remote handset KK-294F × 1							
		Colour Analyzer CA-100							
					Prepared by	Andy	2007-1-4		
					Checked by	Pengxiaohua	2007-1-4		
					Standardized by	Chenzaizai	2007-1-4	Version	
Changing Marks	Quantity	Changing Sheet No.	Signature	Date	Approved by	Chenguojing	2007-1-5	Page 3 of 5	

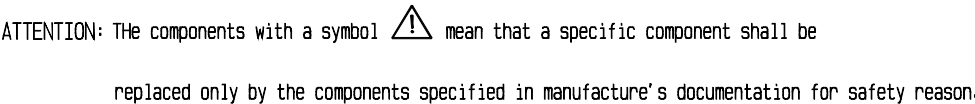
KONKA GROUP CO, LTD Process Document					Product Name		14" Color Television Set		
					Product Type		K14SA208A		
Adjustment Process Card					Procedure Name		Chassis Adjustment		
					Chart No.		K14SA208A-TS		
Adjustment Items			Geometric Distortion adjustment		Oscillogram and meter connection				
Geometric Distortion and Sub-brightness adjustment 1. Receive black-white PAL five circles pattern signal, and set the picture to standard mode, apply 80dB μ V signal. 2. Enter into factory submenu FACTORY MENU 00 to adjust the following items. H-PHASE OSD-H-POSITION V-SIZE V-POSITION V-LINEARRITY V-SC									
Apparatus and Tools		Remote handset KK-294F \times 1							
					Prepared by	Andy	2007-1-4		
					Checked by	Pengxiaohua	2007-1-4		
					Standardized by	Chenzaizai	2007-1-4	Version	
Changing Marks	Quantity	Changing Sheet No.	Signature	Date	Approved by	Chenguojin g	2007-1-5	Page 4 of 5	

KONKA GROUP CO, LTD Process Document					Product Name		14" Color Television Set		
					Product Type		K14SA208A		
Adjustment Process Card					Procedure Name		Chassis Adjustment		
					Chart No.		K14SA208A-TS		
Adjustment Items		HF AGC automatic adjustment			Oscillogram and meter connection				
HF AGC automatic adjustment 1 Receive signal (VHF channel) 2 Set input field strength to 60dB μ V 3 Enter into FACTORY MENU 00, select RF AGC item, press V+ button to adjust RF AGC automatically, and when the adjustment is finished, the screen will display RF AGC value.									
Apparatus and Tools		Remote handset KK-294F \times 1							
					Prepared by	Andy	2007-1-4		
					Checked by	Pengxiaohua	2007-1-4		
					Standardized by	Chenzaizai	2007-1-4	Version	
Changing Marks	Quantity	Changing Sheet No.	Signature	Date	Approved by	Chenguojin g	2007-1-5	Page 5 of 5	

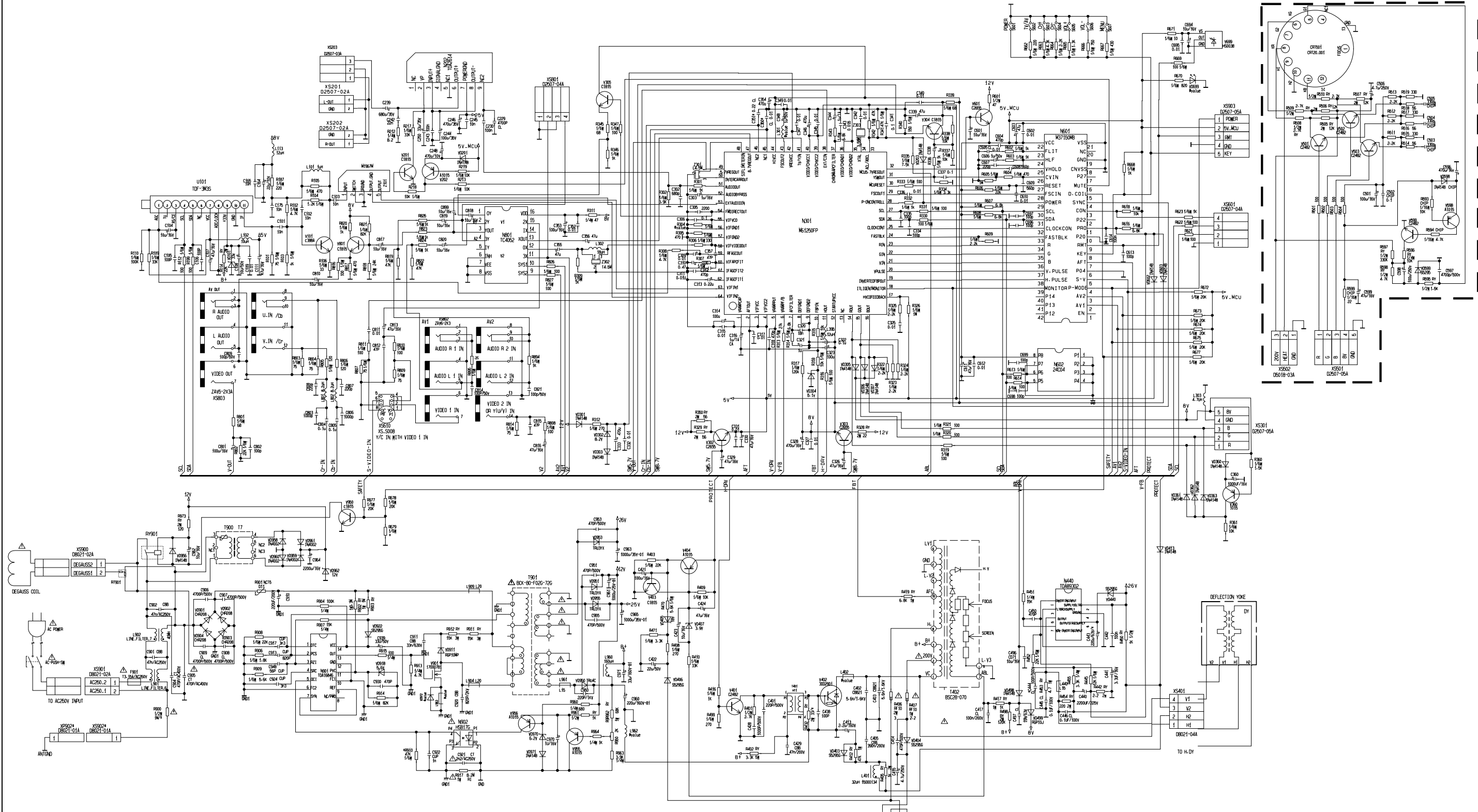
KONKA GROUP CO, LTD Process Document				Product Name		14" Color Television Set		
				Product Type		K14SA208A		
Inspection Process Card				Procedure Name		Chassis Adjustment		
				Chart No.		K14SA208A--TS		
Inspection Items		Factory menu data inspection						
NO.	FACTORY MENU 00		Initial DATA	NO.	OPTION MENU 00		DATA	
1	H.PHASE		△ (11)	1	AV-SW 0: 4052 1:938		1	
2	OSD-H-POSITION		△ (25)	2	SVHS 0:AUTO 1:FIX		0	
3	V.SIZE		△ (82)	3	OPT-AV-SYSTEM		1	
4	V.POSITION		△ (4)	4	OPT-YUV		0	
5	V.LINEARRITY		△ (22)	5	Y-IN 0:P48 1:P54		0	
6	V.SC		△ (5)	6	P48 0:RGB 1YUV		1	
7	V.KILL		0	7	0:AUIO IN 1:VMOUT		0	
8	SUB-BRIGHT		△ (85)					
9	RF-AGC AUTO		△ (AUTO)					
NO.	FACTORY MENU 01		DATA	NO.	OPTION MENU 01		DATA	
1	H-BLK-L		△4	1	TUNER 0:QJ 1:ALPS		0/1	
2	H-BLK-R		△4	用 32000859 设为 "0", 32001099 设为 "1"				
3	B-Y DC LEVEL		△2	2	VOL LINEAR MEASURE		1	
4	R-Y DC LEVEL		△2	3	LV1116 OPT		0	
5	B-Y DC LEVEL-YUV		△6	4	SIF6.5		1	
6	R-Y DC LEVEL-YUV		△6	5	SIF6.0		1	
7	B-Y DC LEVEL-SECAM		△8	6	SIF5.5		1	
8	R-Y DC LEVEL-SECAM		△18	7	SIF4.5		1	
NO.	FACTORY MENU 02		Initial DATA	NO.	OPTION MENU 02		DATA	
1	RED-BIAS		△ (127)	1	CH MUTE 0:OFF 1:ON		1	
2	GREEN-BIAS		△ (127)	2	BACK COVER OPTION		0	
3	BLUE-BIAS		△ (127)	3	Q-ASM OPTION		0	
4	RED-DRIVE		△ (90)	4	OPTION-TURKISH		0	
5	GREEN-DRIVE		△ (10)	5	CHILD LOCK OPT		1	
6	BLUE-DRIVE		△ (90)	6	SUB WOOFER OPT		0	
Apparatus and Tools		REMOTE HANDSET KK-Y294F						
				Prepared by	Andy	2007-1-4	K14SA208A—TS--G JC	
				Checked by	Pengxiaohua	2007-1-4		
				Standardized by	Chenzaizai	2007-1-4		
Changing Marks	Quantity	Changing Sheet No.	Signature	Approved by	Chenguojing	2007-1-5	Version	0
Page 1 of 3								

KONKA GROUP CO, LTD Process Document				Product Name		14" Color Television Set		
				Product Type		K14SA208A		
Inspection Process Card				Procedure Name		Chassis Adjustment		
				Chart No.		K14SA208A--TS		
Inspection Items		Factory menu data inspection						
NO.	ENGINEER MENU 01		DATA	NO.	ENGINEER MENU 04		DATA	
1	H-FREQ		19	6	C BPF TEST		0	
2	V-SIZE-COMP		7	7	C TRAP TEST		7	
3	AFC-GAIN-AND-GATE		1	8	C.TRAP.TEST /60H		7	
4	VSYNC-SEP-UP		1					
5	BLK STR GAIN		0	NO.	ENGINEER MENU 05		DATA	
6	BLK STR START		0	1	OVER MOD LEVEL		6	
7	DC TEST		0	2	OVER MOD SW		1	
8	RF-AGC MANUAL		18	3	VIF SYS SW		0	
				4	G-Y ANGLE		0	
NO.	ENGINEER MENU 02		DATA	5	G-Y AMP		10	
1	OSD-CONTRAST		4	6	Y GAIN		2	
2	EXT.RGB CONTRAST		0	7	Y TH		2	
3	MAX BRIGHT		80	8	V POSITION AC PAL		1	
4	SUB-CONTRAST		63	9	V POSITION AC NTSC		10	
5	SUB-COLOR		63					
6	SUB-SHARP		31	NO.	ENGINEER MENU 06		DATA	
				1	VCO FREQ		108	
				2	VIDEO SW		0 (auto)	
NO.	ENGINEER MENU 03		DATA	3	VIDEO LEVEL		5	
1	S TRAP SW		1	4	VIDEO LEVEL OFFSET		0	
2	SOUND- TRAP		4	5	VM DELAY ADJUST		3	
3	BRT-ABL-DEF		0	6	VM GAIN		4	
4	BRT-ABL-THRESHOLD		7	7	C KILL ON		0 (auto)	
5	BRT-MTD-STOP-DEF		0	8	C KILL OFF		0 (auto)	
6	CORING		0	9	HT NO-COLOR		0	
7	R-Y/B-Y GAIN-BAL		8					
8	R-Y/B-Y ANGLE		8	NO.	ENGINEER MENU 07		DATA	
				1	Y GAMMA		3	
NO.	ENGINEER MENU 04		DATA	2	COLOR KILLER OPE		7	
1	CROSS B/W		0	3	PAL APC SW		0	
2	GRAY MODE		0	4	C VCO ADJ		4	
3	FSC OR CSYNC		0					
4	FBPBLK SW		0					
5	VBLK SW		0					
Apparatus and Tools		REMOTE HANDSET KK-Y294F						
				Prepared by	Andy	2007-1-4	K14SA208A—TS— GJC	
				Checked by	Pengxiaohua	2007-1-4		
				Standardized by	Chenzaizai	2007-1-4		Version
Changing Marks	Quantity	Changing Sheet No.	Signature	Approved by	Chenguojing	2007-1-5	Page 2 of 3	

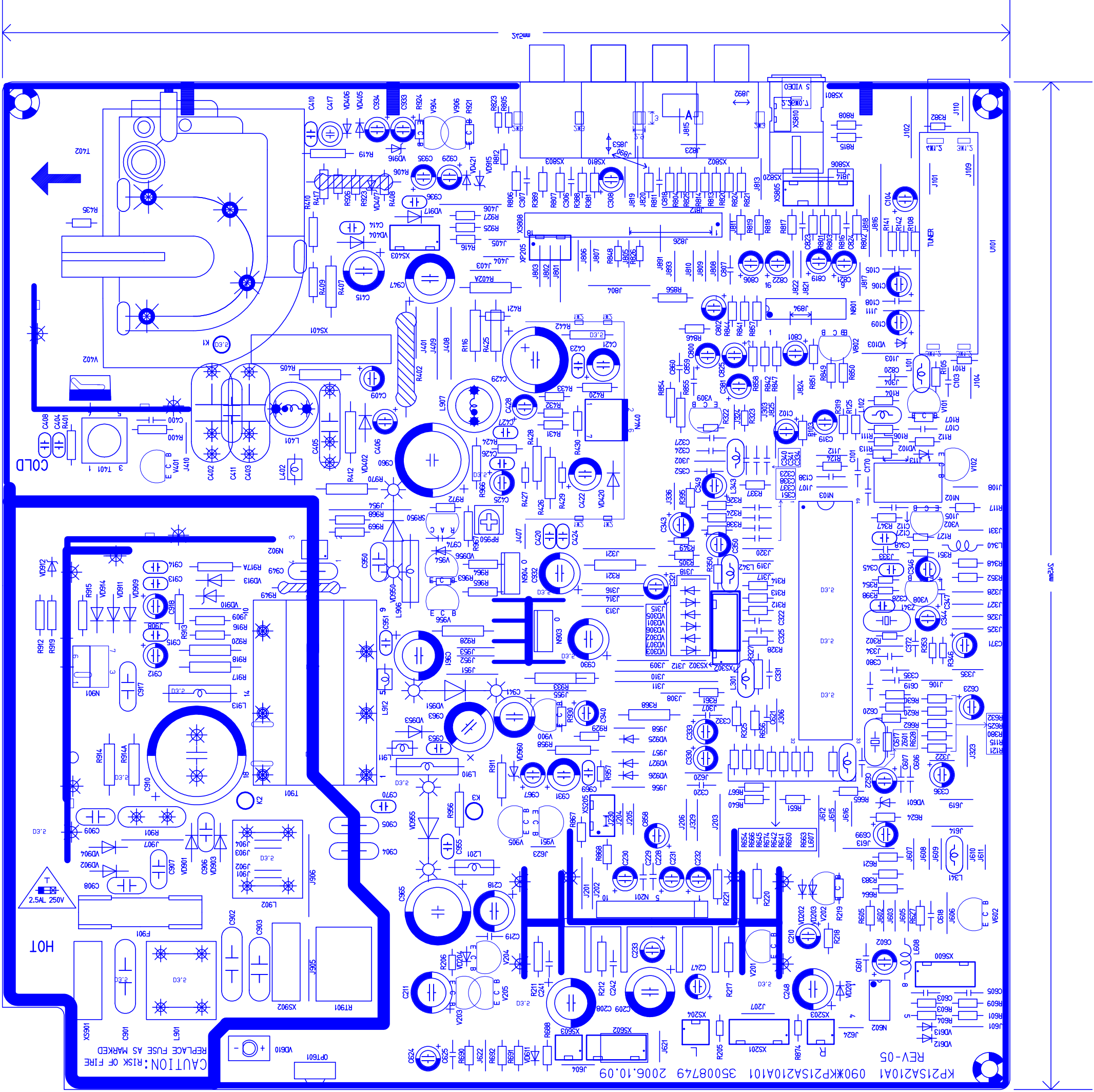
KONKA GROUP CO, LTD Process Document				Product Name		14" Color Television Set	
				Product Type		K14SA208A	
Inspection Process Card				Procedure Name		Chassis Adjustment	
				Chart No.		K14SA208A--TS	
Inspection Items		Factory menu data inspection					
NO.	ENGINEER MENU 08	DATA	NO.	ENGINEER MENU 10	DATA		
1	OVER-SHOOT ADJ	2	1	SYNC SEP SENS	4		
2	PRE-SHOOT ADJ	2	2	POWER-ON-TIME	1		
3	WPL POINT	1	3	BELL.ADJ.SW	1△		
4	AUTO-FLESH	0	4	BELL.ADJ	1△		
5	A.MONI.SW	1	5	EQU.ON	0△		
6	V.TRANS	0	6	EQU.ADJ	8△		
7	V-RESET TIMING	1	7	SEC.KILL.ON	0		
			8	SEC.KILL.OFF	0		
NO.	ENGINEER MENU 09	DATA	NO.	ENGINEER MENU 11	DATA		
1	LV1116 GAIN	3△	1	COLOR SYS	2		
2	LV1116 L+R GAIN	7	2	FILTER-SYSTEM	6 (auto)		
3	MAX VOLUME - DB	5△	3	C-EXT	0 (auto)		
4	MAX TREBLE - DB	0	4	C-BYPASS	0 (auto)		
5	MAX BASS - DB	0	5	CBCR-IN	0		
			6	Y-APF	0		
	NOTE: Press MENU button on the remote control firstly, then press RECALL button three times sequentially to enter FACTORY MENU., then press MUTE button to enter ENGINEER MENU, press DISPLAY to exit menu. Press RECALL button again to exit FACTORY MENU 1 Press P+ or P- button on the remote control to select test item. 2 Press V+ or V- button on the remote control to adjust the value of selected item. 3. Only the FACTORY MENU data with "△" can be adjusted; If need to adjust the others, please consult the designer.						
Apparatus and Tools	REMOTE HANDSET KK-Y294F						
				Prepared by	Andy	2007-1-4	K14SA208A—TS--G JC
				Checked by	Pengxiaohua	2007-1-4	
				Standardized by	Chenzaizai	2007-1-4	
Changing Marks	Quantity	Changing Sheet No.	Signature	Approved by	Chenguojing	2007-1-5	Version 0
Page 3 of 3							



K2073UM(35007575)
MAINBOARD



媒体编号		旧底图总号		底图总号		日期 签名		格式(3)	
								等级 标记	
标 记 数 量 分 区 更改单号 签 名 日期								标 记 数 量 分 区 更改单号 签 名 日期	
拟 制								K2073UM(35007575) MAINBOARD	
审 核								第 1 张 共 1 张	
工 艺									
标 准 化									
批 准									
制 图 :								幅 面 :B2	



CAUTION: RISK OF FIRE
REPLACE FUSE AS MARKED

REV-05

KP21SA210A1 090KKP21SA210A101 35008749 2006.10.09

HOT

2.5A 250V

2.5A

2.5A

2.5A

2.5A

2.5A

2.5A

2.5A

2.5A

2.5A

2.5A

2.5A

2.5A

2.5A

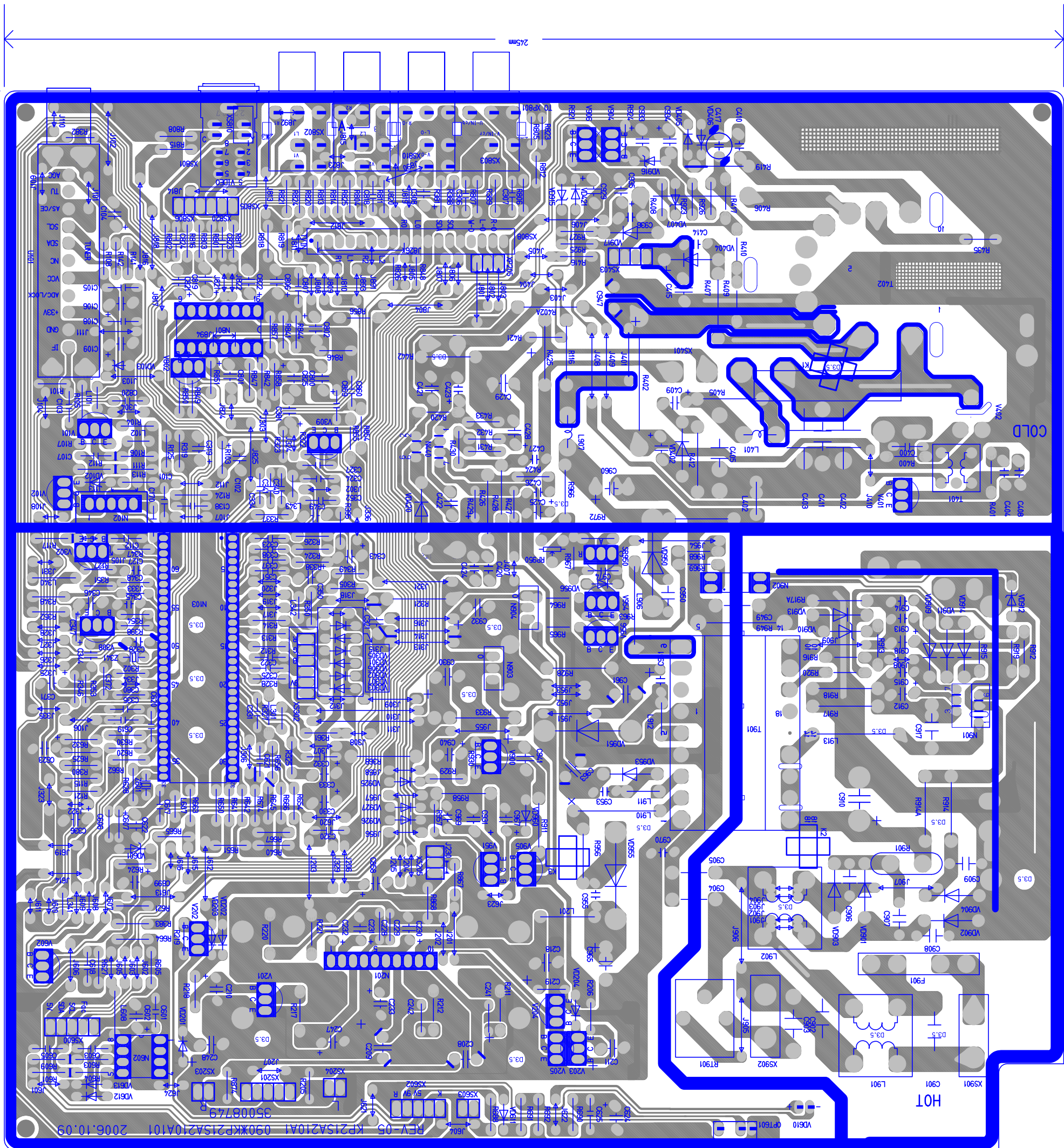
2.5A

2.5A

2.5A

2.5A

2.5A



BOM ELENBERG 1403 (K14SA208A)

1	10	K14SA208ASKD-00	K14SA208A CHASSIS ASSEMBLY GENERAL	1	SET
2	10	23000651	AA POWERSWITCH KDC-A04-5A/80A-2H-26A-HF/AU 046*100001-15A	1	PCS
2	11	23000029	AA POWER SWITCH KDC-A04-5A/80A-2H-26A/A 046*100001-15A	1	PCS
2	20	26002499	TWO-PIN CONNECTOR 08-2T04/T00-280 08-2T04/T00-280	1	PCS
2	40	28000094	*SHRINK PLASTIC SLEEVEΦ3.5-125℃BLA/U.C 079*403500-00	0,1	M
			1 30MMX4POWER SWITCH		
2	50	28000107	*SHRINK PLASTIC SLEEVEΦ6.0-125℃BLA/U.C 079*806000-00	0	M
			1 POWER CORD		
2	60	41000214	*PROCEDURE CARD 592*930101-01 592*930101-01	1	PCS
2	80	25000924	SIX HOLE AV SOCKET AV6-8.4-1	1	PCS
			1 XS810		
2	90	36003210	*WIRE TIE 680*101261-01R 680*101261-01R	3	PCS V0612358A-P
			1 聚焦线-2		
			2 电源线-1		
2	110	K14SA208ASCZJ-00	K14SA208A MANUAL-INSERTION ASS'Y	1	SET
3	10	K14SA208AZB-00	K14SA208A MAIN BOARD GENERAL MATERIAL	1	SET
4	10	14002241	*HIGH FREQUENCY ELEC.CAP. 127*227135-81	1	PCS
			CD288-160V227T/1940		
			1 C960		
4	20	14001942	*MINI. ELEC.CAP.CD110X-25V108M/1020 127*108057-31	1	PCS
			1 C429		
4	30	14004257	*HIGH FREQUENCY ELEC.CAP. 1 PCS V0609042A-I	1	PCS V0609042A-I
			CD288H-25V477M-H/1020		
			1 C961		
4	40	14007112	*HIGH FREQUENCY ELEC.CAP. 1 PCS V0609042A-I	1	PCS V0609042A-I
			1 C965		
4	50	14001758	*AC CERAMIC CAP. 123*222467-42	1	PCS
			CT81-250VAC-2E4-222MYA/b12.5A		
			1 C949		
4	60	14006422	* ELEC.CAP.CD293-400V 227M/2540 优 1 PCS V0611236A-F	1	PCS V0611236A-F
			1 C910		
4	70	14002355	*HIGH FREQUENCY ELEC.CAP. 127*336135-81	1	PCS
			CD288-160V336T/1225		
			1 C947		
4	80	14004022	*AC CERAMIC CAP. 2 PCS	2	PCS
			CT81-250VAC-2B4-471-K-YA/b10A		
			1 C904		
			2 C905		
4	90	14002488	*CERAMIC CAP.CT81-1KV 2B4 471K/c7.5优 123*471650-40	1	PCS
			1 C950		

4	100	14002267	*CERAMIC CAP.CT1-500V 2E4 472Z/b7.5 优	123*472580-42	4	PCS
		1	C906			
		2	C907			
		3	C908			
		4	C909			
4	110	14005522	* ANTI-INTERFERENCE META.CAP.		2	PCS
		1	C901			
		2	C902			
4	120	14003317	*MINI. ELEC.CAP.CD110X-250V475T/1012	127*475215-31	1	PCS
		1	C415			
4	130	14005843	*HIGH FREQUENCE ELEC.CAP.		1	PCS V0609042A-I
		1	C963			
4	140	33000006	*FERRITE BEAD TY3.5×1.0×5/L=7	084*030105-00B	1	PCS
		1	L402			
4	160	15000177	*INDUCTANCE COIL L600-001-60μHK/L7.5	105*600101-01	1	PCS
		1	L907			
4	170	33000006	*FERRITE BEAD TY3.5×1.0×5/L=7	084*030105-00B	2	PCS
		1	L911			
		2	L912			
4	180	33000018	*FERRITE BEAD TY4.0×1.0×15-KH/L=20	084*040116-05	2	PCS
		1	L906			
		2	L910			
4	190	11001572	POWER FILTER LCL-2629V-/A		1	PCS
		1	L901			
4	200	14001956	*ELEC.CAP.CD110-35V 108M/1220 优	127*108067-01	1	PCS
		1	C209			
4	210	37000407	*FUSE BRACKET 466*701201-01	466*701201-01	2	PCS
		1	F901			
4	220	19003790	*IC STR-W6753-TO220-三垦/#		1	PCS
		1	N901			
4	230	20000642	*SAW FILTER F6264K		1	PCS V0608351A-E
		1	N102			
4	240	19004903	IC LA4268-SANYO/#		1	PCS
		1	N201			
4	245	19002979	A3 *IC HCF4052BEY-DIP16-ST/#		1	PCS
		1	N801			
4	246	19000752	A3 *IC TC4052BP-DIP16-TOSHIBA/#	033-304052-14	1	PCS
4	250	19003471	A1 *ICLA78040-SANYO/#		1	PCS
		1	N440			
4	251	19003411	A1 *IC STV9302A-ST/#		1	PCS
4	252	19005226	A1 *IC STV9302B-ST/#		1	PCS
4	260	19003783	A2 *IC M24C08-WBN6-ST/#		1	PCS
		1	N602			

4	261	19003349	A2 *IC AT24C08A-PDIP8-ATMEL/#		1	PCS
4	280	19000695	A4 * HS817B (G) -VISHAY/# 1 N902		1	PCS
4	281	21000251	A4 *OPTOCOUPLER IC TCET1108(G)-Vishay/#		1	PCS
4	290	19002029	A5 *IC L7809CV-TO220-S.T/# 1 N903		1	PCS
4	291	19002611	A5 *IC MC7809CT-TO220-ONSEMI/#		1	PCS
4	300	19000771	A6 *IC L7805CV-TO220FP-SGS/# 1 N904	033-507805-31	1	PCS
4	301	19002610	A6 *IC MC7805CT-TO220-ONSEMI/#		1	PCS
4	320	13000162	*METAL OXIDE FILM RESIS. RY21-1W1ΩJ/S(L)12.5 1 R442	013*109305-75	1	PCS
4	340	13000017	*METAL OXIDE FILM RESIS. RY21-1W10ΩJ/S(L)12.5 1 R958	013*100305-75	1	PCS
4	350	13000123	*METAL OXIDE FILM RESIS. RY21-2W100KΩJ/L15 1 R914A 2 R970	013*104405-75	2	PCS
4	360	13000197	*METAL OXIDE FILM RESIS. RY21-1W120ΩJ/S(L)12.5 1 R368	013*121305-75	1	PCS
4	370	13000505	*METAL OXIDE FILM RESIS. RY21-2W15KΩJ/L15 1 R116	013*153405-75	1	PCS
4	380	13000718	*METAL OXIDE FILM RESIS. RY21-2W180ΩJ/L15 1 R402A	013*181405-75	1	PCS
4	390	13003804	*COATING QUICK-FUSED RESIS. RF10B-1W2.2ΩK/L15-A 1 R407		1	PCS
4	400	13001241	*METAL OXIDE FILM RESIS. RY21-2W220ΩJ/L15 1 R425	013*221405-75	1	PCS
4	410	13001423	*METAL OXIDE FILM RESIS.优 RY21-1W220KΩJ/S(L)12.5 1 R966	013*224305-75	1	PCS
4	420	13001689	*METAL OXIDE FILM RESIS. RY21-2W27ΩJ/L15 1 R933	013*270405-75	1	PCS
4	430	13001938	*METAL OXIDE FILM RESIS. RY21-2W0.27ΩJ/L15	013*278405-75	1	PCS

4	440	13000734	1 R918 *METAL OXIDE FILM RESIS. RY21-1W47KΩJ/S(L)12.5	013*473305-75	1	PCS
4	450	13001009	1 R412 *METAL OXIDE FILM RESIS. RY21-2W51ΩJ/L15	013*510405-75	1	PCS
4	460	13001362	1 R321 *METAL OXIDE FILM RESIS. RY21-1W6.8KΩJ/S(L)12.5	013*682305-75	1	PCS
4	470	13005103	1 R419 *HIGH VOLTAGE INSULATED RESIS. R182-1W8.2MΩJ/A		1	PCS
4	480	13004302	1 R949 *NTC MF72-1-5Ω M 270V		1	PCS
4	490	13002599	1 R901 *GLASSGLAZE TRIMMER POTENTIOMETER WI06-2B-A303L	112*303342-06	1	PCS
4	500	11001522	1 RP950 LINE DRIVE TRANSF.BCT19I-001		1	PCS
4	510	11001652	1 T401 SWITCHING TRANSF. BCK35-067/A-晶辰		1	PCS
4	520	13005255	1 T901 *DEGAUSSING THERMISTOR MZ73L-9RM 优		1	PCS
4	540	32001099	1 RT901 B1 TUNER ETA-SF03/12-庆佳		1	PCS
4	541	32000859	1 U101 B1 TUNER ETA-SF03/1-QINGJIA		1	PCS
4	560	17001911	*TRANSISTOR TT2140LS-SANYO/# 优		1	PCS
4	570	13005223	1 V402 *COATING QUICK-FUSED RESIS.		1	PCS
4	580	16000290	1 R956 B2 *ZENER DIODE INTEGRATED POTENTIOSTAT 优 130*410574-00V		1	PCS
4	581	16002370	1 VD103 B2 *ZENER DIODE INTEGRATED POTENTIOSTAT 优 130-410574-00V		1	PCS
4	590	16000746	*RECTIFIER DIODE CHR208-2A800V/L12.5 优		4	PCS
			1 VD901			
			2 VD902			
			3 VD903			
			4 VD904			
4	591	13003413	*METAL OXIDE FILM RESIS. RY21-2W0.47ΩJ/L15	013*478405-75	1	PCS
4	600	33000018	1 R917 *FERRITE BEAD TY4.0×1.0×15-KH/L=20	084*040116-05	1	PCS

4	610	14002642	1 *MINI. ELEC.CAP.CD110X-25V477M/1020	L913	127*477057-31	1	PCS	
4	620	16000172	2 *FAST RECOVERY DIODE 优	C218	130*310014-00A	1	PCS	
				RU4A-3A600V400ns				
4	630	16001261	1 *FAST RECOVERY DIODE 优	VD955		2	PCS	V0701237A-E
			1	VD950				
			2	VD951				
4	640	34000039	CONNECTOR D2507-2A		060*102255-23	5	PCS	V0609386A
			1	XS203				
			2	XS204				
			4	XS806				
			5	XS805(1,2PIN)				
			6	XS603				
4	650	28002420	*BARE WIRE AWG#26 ϕ 0.6 1Kg=375m		072*726000-00	0	G	V0612319A-K
			1	J826,J110				
4	660	34000072	CONNECTOR D2507-4A		060*104255-23	2	PCS	
			1	XS403				
			2	XS602(1,2,3,4pin)				
4	670	34000088	CONNECTOR D2507-5A		060*105255-23	2	PCS	
			1	XS201				
			2	XS600				
4	680	34000100	CONNECTOR D2507-6A		060*106255-23	1	PCS	
			1	XS302				
4	690	34000080	CONNECTOR D8021-4A		060*104805-08	1	PCS	
			1	XS401				
4	700	34000045	CONNECTOR D8021-2A		060*102805-08	2	PCS	
			1	XS902				
			2	XS901				
4	720	14002357	* CERAMIC CAP.CT81-2KV Bn 681J/c7.5 优		123*681840-40	1	PCS	
			1	C917				
4	740	22000022	*QUARTZ CRYSTAL HC49U-4.433M20-16PF-90 Ω		037*443361-20	1	PCS	
			1	Z341				
4	750	22000002	*QUARTZ CRYSTAL JU38-32.768K20-12.5PF		037*032768-10	1	PCS	
			40K Ω					
			1	Z601				
4	760	37005452	*HEAT SINK EQUIPMENT 484*P2171S20/00		484*P2171S20/00	1	PCS	
			1	N901				
4	770	37000688	*HEAT SINK PLATE 484*292108-01		484*292108-01	1	PCS	
			1	N903				
4	780	37001502	*HEAT SINK PLATE 484*213914-01K2161		484*213914-01	1	PCS	
			1	N440				

4	790	37008772	*HEAT SINK EQUIPMENT 484*P2171S13/00 1 V402	484*P2171S13/00	1	PCS	
4	800	37008882	*HEAT SINK EQUIPMENT 484*T147612/00 1 N201	484*T147612/00	1	PCS	
4	801	38000177	*SPRING WASHER M3 1 N440 2 V402 3 N901	633*055032-07	3	PCS	
4	802	38000183	*PLAIN WASHER M3 1 V402 2 N901	634*070033-05	2	PCS	
4	803	38000224	*TAPPING SCREW W-ST3×8-Zn-C-H 优 1 N201-1	612*300308-10	1	PCS	
4	804	38000239	*MACHINE SCREW P-M3×10-Zn 1 N440 2 V402	600*305010-10	2	PCS	
4	805	38000239	*MACHINE SCREW P-M3×10-Zn 1 N901	600*305010-10	1	PCS	
4	806	38000116	*TAPPING SCREW P-ST3×8-Zn-FT-H 1 N903	610*300408-10	1	PCS	
4	807	38000558	*NUT M3 1 N440 2 V402	620*305025-55	2	PCS	
4	808	38000558	*NUT M3 1 N901	620*305025-55	1	PCS	
4	820	19005741	IC CKP1510S-DIOP64-LA76936N-SANYO/# 1 N103		1	PCS	
4	830	99001332	K14SA208A MAIN BOARD GENERAL MATERIAL		1	SET	
4	840	99000411	K14SA208A MAIN BOARD GENERAL MATERIAL		1	SET	
4	841	99002254	K14SA208A MAIN BOARD GENERAL MATERIAL		1	SET	
4	850	14005756	A7 *AC POLYPROPYLENE CAP. 3 C903		1	PCS	
4	851	14000937	A7 *AC POLYPROPYLENE CAP. CBB62-250VAC473M/12.5A	026*473212-61	2	PCS	
4	860	13005203	*CARBON FILM RESIS. RT13-1/6W68ΩJ/ 1 R382	013*680005-12	1	PCS	V0612319A-K
4	890	K14SA208AZB-04	0 K14SA208A MAIN BOARD ASS'Y		1	SET	
5	10	14001776	* CERAMIC CAP.CT81-2KV Bn 222J/c10 优 1 C402	123*222840-40	1	PCS	V0611235A
5	20	14001028	*METALIZED POLYPROPYLENE CAP. CBB81-1600V752J/20 1 C403	026*752160-41	1	PCS	
5	30	14005107	*METALIZED POLYPROPYLENE CAP.		1	PCS	

				CBB21B-250V394K/20				
				1 C405				
5	40	30001412		FLYBACK TRANSFORMER		BSC25-0155	1	PCS
				1 T402				
5	50	15000172		HORI. LINEARITY COIL HXC-25A/L7.5		105*570101-01	1	PCS
				1 L401				
5	60	13000713		*METAL OXIDE FILM RESIS.		013*471405-75	1	PCS
				RY21-2W470ΩJ/L15				
				1 R405				
5	70	13000181		*FUSED RESIS. RF10-2W0.82ΩJ/L25-A		013*828405-85	1	PCS
				1 R406				
4	900	K14SA208AZB-18	0	K14SA208A MAIN BOARD ASS'Y			1	SET
5	10	14001400		* CERAMIC CAP.CT81-2KV Bn 152J/c10 优		123*152840-40	1	PCS
				1 C402				
5	20	14001028		*METALIZED POLYPROPYLENE CAP.		026*752160-41	1	PCS
				CBB81-1600V752J/20				
				1 C403				
5	30	14005107		*METALIZED POLYPROPYLENE CAP.			1	PCS
				CBB21B-250V394K/20				
				1 C405				
5	40	30001412		FLYBACK TRANSFORMER		BSC25-0155	1	PCS
				1 T402				
5	50	15000134		HORI. LINEARITY COIL HXC-47A/L7.5		105*510101-01	1	PCS
				1 L401				
5	60	13000713		*METAL OXIDE FILM RESIS.		013*471405-75	1	PCS
				RY21-2W470ΩJ/L15				
				1 R405				
5	70	13000293		*FUSED RESIS. RF10-2W1.2ΩJ/25A优		013*129405-85	1	PCS
				1 R406				
4	910	K14SA208AZB-03	0	K14SA208A MAIN BOARD ASS'Y			1	SET
5	10	14000686		*METALIZED POLYPROPYLENE CAP.		026*222160-41	1	PCS
				CBB81-1600V222J/15				
				1 C402				
5	20	14001027		*METALIZED POLYPROPYLENE CAP.		026*722160-41	1	PCS
				CBB81-1600V722J/20				
				1 C403				
5	30	14005309		*METALIZED POLYPROPYLENE CAP.			1	PCS
				CBB21B-250V444K/20				
				1 C405				
5	40	15000134		HORI. LINEARITY COIL HXC-47A/L7.5		105*510101-01	1	PCS
				1 L401				
5	50	30001412		FLYBACK TRANSFORMER		BSC25-0155	1	PCS
				1 T402				

5	60	13000713		*METAL OXIDE FILM RESIS. RY21-2W470ΩJ/L15 1 R405	013*471405-75	1	PCS	
5	70	13001578		*FUSED RESIS. RF10-2W0.68ΩJ/L25A优 1 R406	013*688405-85	1	PCS	
3	20	K14SA208ACRT-00		K14SA208A CRT BOARD GENERAL MATERIAL		1	SET	
4	10	14001776		* CERAMIC CAP.CT81-2KV Bn 222J/c10 优 1 C508	123*222840-40	1	PCS	
4	20	13001928		*METAL OXIDE FILM RESIS.优 RY21-1W3.3MΩJ/S(L)12.5 1 R504	013*335305-75	1	PCS	
4	30	13000505		*METAL OXIDE FILM RESIS. RY21-2W15KΩJ/L15 1 R515 2 R525 3 R535	013*153405-75	3	PCS	
4	40	34000022		CONNECTOR D8021-1A-1 1 XS501	060*101001-08	1	PCS	
4	50	26000505		SIX-PIN CONNECTOR ZJ206360-070 1 XP501->XS302	ZJ*206360-070	1	PCS	
4	60	26000654		FOUR-PIN CONNECTOR ZJ204300-052 1 XP502->XS403	ZJ*204300-052	1	PCS	
4	70	17000065		*TRANSISTOR 2SC2482 4 V504	031*232482-00	1	PCS	V0611236A-F
4	230	14002895		*MINI. ELEC.CAP.CD110X-250V106M/1016 1 C501	127*106217-31	1	PCS	
4	240	14003832		* CERAMIC CAP.CT1-500V 2B4 103K/b7.5 优 1 C505		1	PCS	
4	250	13000120		*METAL OXIDE FILM RESIS.优 RY21-1W100KΩJ/S(L)12.5 1 R502	013*104305-75	1	PCS	
4	260	13001831		*METAL OXIDE FILM RESIS. RY21-1W2.7KΩJ/S(L)12.5 1 R503	013*272305-75	1	PCS	
4	261	17000284		TRANSISTOR 2SC4544-TOSHIBA/# 1 V511 2 V521 3 V531	031-234544-00	3	PCS	V0611236A-F
4	300	K14SA208ACRT-04	0	K14SA208A CRT BOARD ASS'Y		1	SET	
5	10	25000747		CRT SOCKET GZS10-2-AC3-5-14~17KV/A.U 1 CRT1	061*540006U01E	1	PCS	
4	310	K14SA208ACRT-18	0	K14SA208A CRT BOARD ASS'Y		1	SET	
5	10	25001392		CRT SOCKET GZS8-6-AC/A		1	PCS	

QTY	UNIT	ITEM NO	ITEM NAME	ITEM CODE	ITEM DESCRIPTION	ITEM CODE	ITEM DESCRIPTION	ITEM CODE	ITEM DESCRIPTION	ITEM CODE	ITEM DESCRIPTION
4	320	K14SA208ACRT-03	0	K14SA208A CRT BOARD ASS'Y	1	CRT1	1	SET			
5	10	25001392		CRT SOCKET GZS8-6-AC/A	1	CRT2	1	PCS			
3	40	K14SA208AAJB-00		K14SA208A KEY BOARD ASS'Y	1	CRT2	1	SET			
4	10	23000226		TOUCH SWITCH KFC-A06-L4-4.5×6.5-4.3B	046*100001-45		6	PCS			
				1	S601A						
				2	S602A						
				3	S603A						
				4	S604A						
				5	S605A						
				6	S606A						
4	20	26004280		TWO-PIN CONNECTOR 03-2T01/2TW2-240	03-2T01/2TW2-240		1	PCS			
				1	XP603->XS603						
3	50	K14SA208AYKJSB-00		K14SA208A REMOTE CONTROL RECEIVING			1	SET			
4	10	16000723		*LED BT-H202YXN-31-R LUCID Φ3 优			1	PCS			
				1	VD610A						
4	20	21000351	A	*IR REMOTE CONTROL RECEIVER			1	PCS	V0609222A-B		
				1	OPT601A						
4	21	21000291	A	*IR REMOTE CONTROL RECEIVER			1	PCS	V0609222A-B		
4	22	21000311	A	*IR REMOTE CONTROL RECEIVER			1	PCS			
4	30	26004286		FIVE-PIN CONNECTOR 03-4T01/4T02-240	03-4T01/4T02-240		1	PCS			
				1	XP603->XS602(1,2,3,4 PIN)						
3	60	K14SA208ACDAVB-00		K14SA208A AV ASS'Y			1	SET			
4	10	26000278		TWO-PIN CONNECTOR 03-2T01/2T02-400	03-2T01/2T02-400		1	PCS			
				1	XP802A(反丝印)	->XS806					
4	20	26000279		TWO-PIN SHIELD 18-2T01/2T02-430	18-2T01/2T02-430		1	PCS	V0609386A		
				1	XP801(反丝印)->XS805						
4	30	26001458		FIVE-PIN CONNECTOR 01-5T01/5T02-300	01-5T01/5T02-300		1	PCS			
				1	XP202->XS201						
4	40	25001375		STEREO JACK ST-035-070-100			1	PCS	V0609386A		
				1	XS202A						
4	50	25000187		THREE HOLE AV SOCKET WK3-8.4-13	061*468401-00		1	PCS	V0609386A		
				1	XS801A						
2	120	K14SA208ADCZJ-00		K14SA208A AUTO-INSERTION ASS'Y			1	SET			
3	10	K14SA208AZBDC-00		K14SA208A BOARD AUTO-INSERTION ASS'Y			1	SET			
4	10	14004202		*AXIAL LEADED CERAMIC CAP.			2	PCS			
				UP050CH101J-B-BZ-TAIYANGYUODIAN/#H							
				1	C603						
				2	C605						
4	20	14004211		*AXIAL LEADED CERAMIC CAP.			1	PCS			
				UP050B102K-B-B-TAIYANGYUODIAN/#H							
				1	C170						

4	30	14001870	* CERAMIC CAP.CT1-50V 2F4 102Z/V 优 1 C423	123*102370-30V	1	PCS
4	40	14000396	*METALIZED POLY.CAP.CL21-63V 103K/V 优 1 C404	026*103081-21V	1	PCS
4	50	14004942	*AXIAL LEADED CERAMIC CAP. UP050B103K-B-BZ-TAIYOYUDEN/#H 1 C101 2 C103 3 C105 4 C107 5 C112 6 C322 7 C331 8 C335 9 C347 10 C351 12 C338 14 C601 15 C617 16 C618 17 C620 18 C621 20 C807 22 C974 23 C327 24 C320 25 C324		21	PCS V0612319A-K
4	60	14001536	*TV CERAMIC CAP.CC1-50V-SL180K/V 1 C328	123*180350-10V	1	PCS
4	70	14000405	*INDUCTIVE POLY. CAP. CL11-100V103K/V 1 C914	026*103111-01V	1	PCS V0611264A-I
4	80	14005590	*AXIAL LEADED CERAMIC CAP. 1 C108 2 C138 3 C219 5 C242 8 C859 9 C860		6	PCS
4	90	14000469	*TERRACE META.POLY.CAP.CL23B-63V104K/V 1 C913 2 C426 3 C427	026*104081-71V	3	PCS
4	100	14002800	*ELEC.CAP.CD110-16V105M/0512V	127*105047-01V	8	PCS

			1	C102			
			2	C333			
			3	C349			
			4	C371			
			5	C428			
			6	C425			
			7	C819			
			8	C822			
4	110	14002807	*NON-POLARIZED ELEC.CAP		127*105047-21V	1	PCS
			CD71-16V105M/0512V				
			1	C970			
4	120	14002863	*ELEC.CAP.CD110-16V106M/0512V		127*106047-01V	8	PCS
			1	C381			
			3	C940			
			4	C934			
			5	C967			
			6	C802			
			7	C800			
			8	C858			
			9	C801			
4	130	14005042	*ELEC.CAP.CD110-35V106M/0512V		127*106067-01V	1	PCS
			1	C918			
4	140	14002910	*MINI. ELEC.CAP.CD110X-16V107M/0612V		127*107047-31V	7	PCS
			1	C232			
			2	C233			
			3	C321			
			4	C929			
			5	C806			
			6	C248			
			7	C247			
4	150	14002922	*MINI. ELEC.CAP.CD110X-35V107M/0812V		127*107067-31V	2	PCS
			1	C421			
			2	C422			
4	160	14005666	*AXIAL LEADED CERAMIC CAP.			1	PCS
			1	C337			
4	170	14005662	*AXIAL LEADED CERAMIC CAP.			2	PCS
			4	C332			
			5	C323			
4	180	14004209	*AXIAL LEADED CERAMIC CAP.			1	PCS
			UP050CH221J-B-BZ-TAIYANGYUODIAN/#H				
			1	C380			
4	190	14001831	*CERAMIC CAP.CT1-500V 2B4 221K/V 优		123*221550-40V	1	PCS
			1	C408			

4	200	14004208	*AXIAL LEADED CERAMIC CAP. UP050B222K-B-BZ-TAIYANGYUODIAN/#H 1 C352		1	PCS
4	210	14004972	*AXIAL LEADED CERAMIC CAP. UP050F223Z-B-BZ-TAIYANGYUODIAN/#H 2 C334		1	PCS
4	220	14002014	*ELEC.CAP.CD110-50V 225M/0511V 优 1 C912	127*225077-01V	1	PCS
4	230	14002951	*ELEC.CAP.CD110-16V225M/0512V 1 C319 2 C623	127*225047-01V	2	PCS
4	240	14002017	*NON-POLARIZED ELEC.CAP. CD71-50V225M/0512V 1 C417	127*225077-21V	1	PCS
4	250	14004863	*普通电解CD110-160V 225M/0511V 优 1 C409	127*225137-31V	1	PCS
4	260	14002092	*ELEC.CAP.CD110-50V 226M/0511V 优 1 C935	127*226077-01V	1	PCS
4	270	14004213	*AXIAL LEADED CERAMIC CAP. UP050CH330J-B-BZ-TAIYANGYUODIAN/#H 1 C340 2 C341 3 C606 4 C607		4	PCS
4	280	14005589	*AXIAL LEADED CERAMIC CAP. 1 C619		1	PCS
4	290	14002124	*MINI. ELEC.CAP.CD110X-16V227M/0812V 1 C930 2 C931 3 C932	127*227047-31V	3	PCS
4	300	14004214	*AXIAL LEADED CERAMIC CAP. UP050CH470J-B-BZ-TAIYANGYUODIAN/#H 1 C818 2 C823		2	PCS
4	310	14002434	*CERAMIC CAP.CT1-50V 2B4 471K/V 优 1 C936	123*471350-40V	1	PCS
4	320	14002472	*CERAMIC CAP.CT1-500V 2B4 471K/V 优 1 C414 2 C951 3 C953 4 C955	123*471550-40V	4	PCS
4	330	14000949	*MINI. METALIZED POLY.CAP.CL21X-63V474K/ 1 C325	026*474081-21V	1	PCS

4	340	14002516	*ELEC.CAP.CD110-16V474M/0512V 1 C344	127*474047-01V	1	PCS	
4	350	14005664	*AXIAL LEADED CERAMIC CAP. 1 C348		1	PCS	
4	360	14002465	*ELEC.CAP.CD110-50V 475M/0511V 优 1 C109	127*475077-01V	1	PCS	
4	370	14002720	*MINI. ELEC.CAP.CD110X-16V476M/0512V 1 C106 3 C308 4 C330 5 C336 6 C346 7 C350 8 C602 9 C622 11 C699 15 C933 16 C230	127*476047-31V	11	PCS	V0612319A-K
4	380	14002616	*ELEC.CAP.CD110-16V 477M/0812V 优 1 C211	127*477047-01V	1	PCS	
4	400	15000013	*INDU.WITH COLOR CODES LGB0606-1R0K/V 优 1 L102	105*010103-00V	1	PCS	
4	410	15000017	*INDU.WITH COLOR CODES LGB0606-100K/V 优 1 L101	105*100101-02V	1	PCS	
4	420	15000055	A1 *INDU.WITH COLOR CODES LGB0606-120K/V 优 1 L301	105*120101-02V	1	PCS	GYM070101A
4	421	15001822	A1 *AXIALINDUCTORCOLOR CODES LAV35VB 120K/V		1	PCS	GYM070101A
4	430	15000072	*INDU.WITH COLOR CODES LGB0606-150K/V 优 1 L343	105*150101-02V	1	PCS	
4	440	15000103	*INDU.WITH COLOR CODES LGB0606-220K/V 优 2 L341 3 L342 4 L607	105*220101-02V	3	PCS	
4	450	15000106	*INDU.WITH COLOR CODES LGA0307-220K/H 优 1 L608 2 L340	105*220103-77H	2	PCS	
4	470	13000030	*CARBON FILM RESIS. RT13-1/6W100ΩJ/H 优 1 R101 2 R103 3 R141 4 R142 5 R312 6 R313	013*101005-12H	27	PCS	V0612319A-K

			7	R314		
			10	R416		
			11	R603		
			12	R604		
			13	R605		
			14	R620		
			15	R630		
			16	R632		
			17	R641		
			18	R642		
			19	R650		
			20	R654		
			21	R656		
			22	R662		
			23	R663		
			24	R666		
			26	R803		
			27	R804		
			32	R916		
			33	R854		
			34	R855		
4	480	13000058	*CARBON FILM RESIS. RT13-1/6W 1KΩJ/H优		013*102005-12H	13 PCS
			1	R105		
			2	R117		
			3	R121		
			4	R322		
			7	R354		
			8	R398		
			9	R621		
			11	R821		
			12	R825		
			14	R868		
			15	R968		
			20	R812		
			21	R817		
4	490	13000062	*CARBON FILM RESIS. RT14-1/4W 1KΩJ/H优		013*102105-12H	5 PCS
			2	R417		
			3	R912		
			4	R919		
			5	R969		
			6	R401		
4	500	13000083	*CARBON FILM RESIS. RT13-1/6W10KΩJ/H优		013*103005-12H	10 PCS
			1	R108		

			2	R206			
			3	R219			
			4	R338			
			5	R408			
			6	R924			
			7	R963			
			8	R964			
			9	R965			
			10	R218			
4	510	13000106	*CARBON FILM RESIS. RT13-1/6W100KΩJ/H优		013*104005-12H	3	PCS
			1	R124			
			2	R125			
			3	R349			
4	520	13000190	*CARBON FILM RESIS. RT13-1/6W120ΩJ/H优		013*121005-12H	1	PCS
			1	R323			
4	530	13000208	*CARBON FILM RESIS. RT13-1/6W1.2KΩJ/H优		013*122005-12H	1	PCS
			1	R348			
4	540	13000211	*CARBON FILM RESIS. RT14-1/4W1.2KΩJ/H优		013*122105-12H	1	PCS
			1	R915			
4	550	13000305	*CARBON FILM RESIS. RT13-1/6W13KΩJ/H优		013*133005-12H	1	PCS
			1	R433			
4	560	13000487	*CARBON FILM RESIS. RT13-1/6W15KΩJ/H优		013*153005-12H	2	PCS V0611235A
			1	R925			
			2	R324			
4	570	13000564	*CARBON FILM RESIS. RT13-1/6W1.5MΩJ/H优		013*155005-12H	1	PCS
			1	R625			
4	580	13000730	*CARBON FILM RESIS. RT13-1/6W1.8KΩJ/H优		013*182005-12H	1	PCS
			1	R383			
4	590	13000769	*CARBON FILM RESIS. RT13-1/6W18KΩJ/H优		013*183005-12H	3	PCS
			1	R346			
			2	R427			
			3	R923			
4	600	13001253	*CARBON FILM RESIS. RT13-1/6W2.2KΩJ/H优		013*222005-12H	2	PCS
			1	R112			
			2	R113			
4	610	13001312	*CARBON FILM RESIS. RT13-1/6W22KΩJ/H优		013*223005-12H	2	PCS
			1	R421			
			6	R921			
4	620	13000154	*CARBON FILM RESIS. RT14-1/4W 1ΩJ/H 优		013*109105-12H	1	PCS
			1	R212			
4	630	13001376	*CARBON FILM RESIS. RT13-1/6W220KΩJ/H优		013*224005-12H	1	PCS
			1	R305			
4	640	13001383	*CARBON FILM RESIS. RT14-1/4W220KΩJ/H优		013*224105-12H	1	PCS

			1	R967				
4	650	13001626	*CARBON FILM RESIS. RT13-1/6W24KΩJ/H优		013*243005-12H	1	PCS	
			1	R353				
4	660	13001647	*CARBON FILM RESIS. RT13-1/6W240KΩJ/H优		013*244005-12H	1	PCS	
			1	R115				
4	670	13001672	*CARBON FILM RESIS. RT13-1/6W 27ΩJ/H 优		013*270005-12H	1	PCS	
			1	R107				
4	680	13001791	*CARBON FILM RESIS. RT14-1/4W2.7KΩJ/H优		013*272105-12H	1	PCS	
			1	R911				
4	690	13002159	*CARBON FILM RESIS. RT13-1/6W 330ΩJ/H优		013*331005-12H	1	PCS	
			1	R337				
4	700	13002064	*CARBON FILM RESIS. RT13-1/6W3.3KΩJ/H优		013*332005-12H	2	PCS	
			1	R325				
			2	R674				
4	710	13000375	*CARBON FILM RESIS. RT13-1/6W3.9KΩJ/H优		013*392005-12H	1	PCS	V0611235A
			1	R432				
4	720	13000343	*CARBON FILM RESIS. RT13-1/6W390ΩJ/H优		013*391005-12H	1	PCS	
			1	R957				
4	730	13000443	*CARBON FILM RESIS. RT13-1/6W390KΩJ/H优		013*394005-12H	1	PCS	
			1	R628				
4	740	13000554	*CARBON FILM RESIS. RT13-1/6W 43KΩJ/H优		013*433005-12H	1	PCS	
			2	R927				
4	750	13000819	*CARBON FILM RESIS. RT13-1/6W4.7ΩJ/H优		013*479005-12H	1	PCS	
			1	R424				
4	760	13000670	*CARBON FILM RESIS. RT13-1/6W 470ΩJ/H优		013*471005-12H	2	PCS	
			1	R106				
			2	R302				
4	770	13000739	*CARBON FILM RESIS. RT13-1/6W4.7kΩJ/H优		013*472005-12H	11	PCS	
			1	R104				
			2	R327				
			3	R420				
			4	R601				
			5	R609				
			6	R640				
			7	R645				
			8	R651				
			9	R664				
			10	R665				
			11	R667				
4	772	13000416	*CARBON FILM RESIS. RT13-1/6W 39KΩJ/H优		013*393005-12H	6	PCS	
			1	R841				
			2	R842				
			3	R844				

			4	R846				
			5	R857				
			6	R858				
4	774	13000590	*CARBON FILM RESIS. RT14-1/4W 47ΩJ/H 优		013*470105-12H	1	PCS	
			1	R856				
4	780	13000754	*CARBON FILM RESIS. RT13-1/6W 47kΩJ/H 优		013*473005-12H	3	PCS	
			2	R350				
			4	R929				
			5	R930				
4	790	13000758	*CARBON FILM RESIS. RT14-1/4W47kΩJ/H 优		013*473105-12H	1	PCS	
			2	R410				
4	800	13000973	*CARBON FILM RESIS. RT13-1/6W 510ΩJ/H 优		013*511005-12H	1	PCS	
			1	R351				
4	810	13001090	*CARBON FILM RESIS. RT13-1/6W560ΩJ/H 优		013*561005-12H	3	PCS	
			1	R127				
			2	R352				
			3	R624				
4	812	13001095	*CARBON FILM RESIS. RT13-1/6W5.6KΩJ/H 优		013*562005-12H	4	PCS	V0612319A-K
			1	R972				
			3	R627				
			4	R380				
			5	R395				
4	830	13001170	*CARBON FILM RESIS. RT13-1/6W 56kΩJ/H 优		013*563005-12H	1	PCS	
			1	R926				
4	840	13001187	*CARBON FILM RESIS. RT14-1/4W56KΩJ/H 优		013*563105-12H	1	PCS	
			1	R409				
4	860	13001398	*CARBON FILM RESIS. RT13-1/6W 680ΩJ/H 优		013*681005-12H	1	PCS	
			1	R361				
4	870	13001400	*CARBON FILM RESIS. RT13-1/6W6.8KΩJ/H 优		013*682005-12H	2	PCS	
			1	R111				
			2	R429				
4	880	13001407	*CARBON FILM RESIS. RT13-1/6W680KΩJ/H 优		013*684005-12H	1	PCS	
			1	R319				
4	890	13001752	*CARBON FILM RESIS. RT13-1/6W 75ΩJ/H 优		013*750005-12H	2	PCS	
			1	R801				
			6	R811				
4	900	13001755	*CARBON FILM RESIS. RT13-1/6W750ΩJ/H 优		013*751005-12H	1	PCS	
			1	R217				
4	910	13000234	*CARBON FILM RESIS. RT13-1/6W9.1KΩJ/H 优		013*912005-12H	1	PCS	
			1	R431				
4	920	17000058	*TRANSISTOR 2SC388A-20~200/V 优		031*230388-00V	1	PCS	
			1	V101				
4	930	17000060	*TRANSISTOR 2SC1815-Y/V 优		031*231815-26V	8	PCS	

			1	V102			
			2	V201			
			3	V204			
			5	V309			
			6	V900			
			7	V906			
			8	V954			
			9	V956			
4	940	17000056	*TRANSISTOR 2SA1015-Y/V 优		031*211015-00V	6	PCS
			1	V202			
			2	V203			
			3	V302			
			4	V308			
			5	V602			
			6	V904			
4	950	17001211	*TRANSISTOR 3DG2655/V 优			1	PCS
			1	V951			
4	960	16001670	Z1 * DIODE IN4148-PHILIPS/#H 优			14	PCS V0612319A-K
			1	VD201			
			2	VD202			
			3	VD203			
			4	VD204			
			8	VD305			
			9	VD306			
			10	VD307			
			11	VD405			
			12	VD406			
			13	VD421			
			15	VD917			
			16	VD925			
			17	VD926			
			18	VD927			
4	961	16000165	Z1 *SWITCHING DIODE IN4148-0.1A75V4ns/H 优		130*134148-00H	15	PCS
4	970	16001890	*FAST RECOVERY DIODE 优		130*315295-00H	4	PCS
			1	VD402			
			2	VD404			
			3	VD420			
			4	VD911			
4	980	16001672	Z2 * DIODE BZX79-B/C3V6-PHILIPS/#H 优			1	PCS
			1	VD601			
4	981	16001121	Z2 *ZENER DIODE 0.5W3V6-3.4~3.8/H 优		130*410036-00H	1	PCS
4	990	16001673	Z3 * DIODE BZX79-B/C3V9-PHILIPS/#H 优			1	PCS
			1	VD956			

4	991	16000215	Z3 *ZENER DIODE 0.5W3V9-3.7~4.1/H 优	130*410039-00H	1	PCS
4	###	16001674	Z4 * DIODE BZX79-B/C5V1-PHILIPS/##H 优 1 VD407		1	PCS
4	###	16000223	Z4 *ZENER DIODE 0.5W5V1-4.85~5.35/H	130*410051-01H	1	PCS
4	###	16001675	Z5 * DIODE BZX79-B/C5V6-PHILIPS/##H 优 1 VD960		1	PCS
4	###	16000225	Z5 *ZENER DIODE 0.5W5V6-5.35~5.85/H 优	130*410056-00H	1	PCS
4	###	16001676	Z6 * DIODE BZX79-B/C6V2-PHILIPS/##H 优 1 VD912		1	PCS
4	###	16000231	Z6 *ZENER DIODE 0.5W6V2-5.95~6.45/H 优	130*410062-00H	1	PCS
4	###	16001677	Z7 * DIODE BZX79-B/C6V8-PHILIPS/##H 优 1 VD915 2 VD916		2	PCS
4	###	16000236	Z7 *ZENER DIODE 0.5W6V8-6.55~7.05/H 优	130*410068-00H	2	PCS
4	###	16000184	*HIGH-FREQUENCY RECTIFIER DIODE 优 MA858-0.1A35V/H 1 VD102	130*310858-00H	1	PCS
4	###	28002420	*BARE WIRE AWG#26 φ0.6 1Kg=375m 1 J202,J203,J101-J109 2 J302,J304,J306-J329, 3 J403-J410,J401, 4 J901-J909,J804-J815,	072*726000-00 J207, R826,J206,,R824,R823, J331,J333,J335,J336,R928, J601-J616,J817-J825 J951-J958,J892,J111-J112 J619-J621	9	G V0612319A-K
4	###	38000209	*EYELET 2.3×3 TINNING 1 N901-2 2 C910-2 3 V402-2 4 N201-2 5 VD955-2 6 T901-6 7 VD950-2 8 VD951-2	640*023030-01	20	PCS V0701237A-E
4	###	38000199	*EYELET 1.7×3 TINNING 1 L901-4 2 T402-4 4 L907-2 5 R901-2 6 C402-2 7 C403-2 8 L401-2 9 C405-2	640*017030-01	20	PCS
4	###	41000091	*DATE LABEL 569*028001-00	569*028001-00	1	PCS
4	###	41000131	*QC LABEL (BLUE)569*382801-01	569*382801-01	1	PCS
4	###	14002548	*ELEC.CAP.CD110-16V475M/0512V	127*475047-01V	2	PCS

			1	C104							
			2	C343							
4	###	14003617		*MINI. ELEC.CAP.CD110X-50V476M/0612V	127*476077-31V	1	PCS				
			1	C406							
4	###	35008749		*MAIN BOARD 090*KP21SA210A101/00/A	090*KP21SA210A101	1	PCS				
4	###	13005803		*METAL OXIDE FILM RESIS.	013*100205-72H	1	PCS				
			1	R920							
4	###	33000531		*FERRITE BEAD TY3.5×1.0×9-KE/H	084*030109-00H	1	PCS				
			1	L201							
4	###	17001971		*TRANSISTOR 3DG2383(Y)/V 优		1	PCS	V0609386A			
			1	V401							
4	###	16001891		*FAST RECOVERY DIODE 优		2	PCS	V0611236A-F			
			1	VD909							
			2	VD914							
4	###	16002070		*FAST RECOVERDIODE 优		1	PCS				
			1	VD953							
4	###	17001891		*TRANSISTOR 3CG751-150~400/H 优	031*630751-00H	1	PCS				
			1	V905							
4	###	14003515		*METALIZED POLY.CAP.CL21-63V 473K/V 优	026*473081-21V	2	PCS				
			1	C127							
			2	C345							
4	###	14001253		*CERAMIC CAP.CT1-50V 2F4 103Z/V 优	123*103370-30V	3	PCS				
			1	C420							
			2	C424							
			3	C969							
4	###	13000981		*CARBON FILM RESIS. RT13-1/6W20KΩJ/H 优	013*203005-12H	1	PCS	V0611235A			
			1	R326							
4	###	13001777		*CARBON FILM RESIS. RT13-1/6W8.2KΩJ/H 优	013*822005-12H	1	PCS				
			1	R220							
4	###	41005622		*LABEL 569*2.5A10/01	569*2.5A10/01	1	PCS	V0609245A			
			1	贴住PCB板上的保险丝	印						
4	###	19005689	Z8	*IC AZ431AZ-ATRE1-TO92-BCD/V#		1	PCS	V060929			
			1	SR950							
4	###	19005840	Z8	*IC KA431Z-TO92-FAIRCHILD/#V	033-500341-61V	1	PCS	V060929			
4	###	13002028		*CARBON FILM RESIS. RT13-1/6W 3KΩJ/H 优	013*302005-12H	1	PCS	V0611235A			
			1	R328							
4	###	14002446		*TV CERAMIC CAP.CT1-500V-2B4-471K/b5	123*471550-40	1	PCS	V0611235A			
			1	C410							
4	###	K14SA208AZBDC-04	0	K14SA208A BOARD AUTO-INSERTION ASS'Y		1	SET				
5	10	13000416		*CARBON FILM RESIS. RT13-1/6W 39KΩJ/H 优	013*393005-12H	1	PCS	V0611235A			
			1	R430							
4	###	K14SA208AZBDC-18	0	K14SA208A BOARD AUTO-INSERTION ASS'Y		1	SET				
5	10	13000554		*CARBON FILM RESIS. RT13-1/6W 43KΩJ/H 优	013*433005-12H	1	PCS				

[illegible]

5	20	13000030		*CARBON FILM RESIS. RT13-1/6W100ΩJ/H优	013*101005-12H	2	PCS
				1 R511A			
				2 R521A			
5	30	13005923	B	*ORGANIC SOLID COMPOSITION RESIS.		1	PCS
				1 R538A			
5	31	13006145	B	*ORGANIC SOLID COMPOSITION RESIS.		1	PCS
4	270	K14SA208ACRTDC-03	0	K14SA208A CRT BOARD ASS'Y		1	SET
5	10	14002084		* CERAMIC CAP.CT1-500V 2B4 331K/V 优	123*331550-40V	3	PCS V0611263A
				1 C512			
				2 C518			
				3 C532			
5	20	13000030		*CARBON FILM RESIS. RT13-1/6W100ΩJ/H优	013*101005-12H	2	PCS
				1 R511A			
				2 R521A			
5	30	13005923	B	*ORGANIC SOLID COMPOSITION RESIS.		1	PCS
				1 R538A			
5	40	13006145	B	*ORGANIC SOLID COMPOSITION RESIS.		1	PCS
3	40	K14SA208AAJDC-00		K14SA208A KEY BOARD AUTO-INSERTION ASS		1	SET
4	10	35007075		KEYP.C.B 090*K1408SZ210/00/A	090*K1408SZ210/00	1	PCS
4	20	13000343		*CARBON FILM RESIS. RT13-1/6W390ΩJ/H优	013*391005-12H	1	PCS
				1 R682A			
4	30	13000208		*CARBON FILM RESIS. RT13-1/6W1.2KΩJ/H优	013*122005-12H	1	PCS
				1 R683A			
4	40	13001781		*CARBON FILM RESIS. RT13-1/6W2.7KΩJ/H优	013*272005-12H	1	PCS
				1 R684A			
4	60	13001760		*CARBON FILM RESIS. RT13-1/6W7.5KΩJ/H优	013*752005-12H	1	PCS
				1 R686A			
4	70	13000542		*CARBON FILM RESIS. RT13-1/6W4.3KΩJ/H优	013*432005-12H	1	PCS
				1 R685A			
4	80	13000224		*CARBON FILM RESIS. RT13-1/6W12KΩJ/H优	013*123005-12H	1	PCS
				1 R687A			
3	50	K14SA208AYKJSDC-00		K14SA208A REMOET CONEROL RECEIVING		1	SET
4	10	35007055		P.C.B 090*K1308UM01/00/A	090*K1308UM01/00	1	PCS
4	20	13000030		*CARBON FILM RESIS. RT13-1/6W100ΩJ/H优	013*101005-12H	1	PCS
				1 R690A			
4	100	13000058		*CARBON FILM RESIS. RT13-1/6W 1KΩJ/H优	013*102005-12H	1	PCS
				1 R691A			
4	110	13002064		*CARBON FILM RESIS. RT13-1/6W3.3KΩJ/H优	013*332005-12H	1	PCS
				1 R692A			
4	120	14002715		*ELEC.CAP.CD110-16V476M/0512V	127*476047-01V	1	PCS
				1 C624A			
4	130	14001253		*CERAMIC CAP.CT1-50V 2F4 103Z/V 优	123*103370-30V	1	PCS
				1 C625A			

3	60	K14SA208ACDAVDC-00	K14SA208A AV BOARD AUTO-INSERTION ASS'		1	SET	
4	10	35006818	P.C.B 090*K1307UM04/00/A	090*K1307UM04/00	1	PCS	
4	20	28002420	*BARE WIRE AWG#26 φ0.6 1Kg=375m	072*726000-00	0,5	G	
			1 C864A,R886A,C861A,	R883A,R880A,J200			
4	30	13006196	*CARBON FILM RESIS. RT15-1/2W100ΩJ/H 优	013*101205-12H	2	PCS	
			1 R201A				
			2 R202A				
2	130	K14SA208ASKD-KK	A1 K14SA208A SKD CHASSIS ASSEMBLE		1	SET	V0611211A
3	10	27001007	POWER SUPPLY CORD		1	PCS	
3	20	27001317	*FUSE RT1-20-2.5A-250V/A		1	PCS	V0701112A
			1 F901				
2	140	K14SA208ASKD-RU	A1 K14SA208A CHASSIS ASSEMBLY GENERAL		1	SET	V0611211A
3	10	27001007	POWER SUPPLY CORD		1	PCS	
3	20	27001317	*FUSE RT1-20-2.5A-250V/A		1	PCS	V0701112A
			1 F901				
2	150	K14SA208ASKD-AE	A1 K14SA208A CHASSIS ASSEMBLY GENERAL		1	SET	V0701112A
3	10	27001007	POWER SUPPLY CORD		1	PCS	
3	20	27000998	*FUSE RT1-20-3.15A-250V/A.U	082*223150-03	1	PCS	
			1 F901				
1	20	K14SA208AZZ-00	K14SA208A ASSEMBLY PARTS GENERAL		1	SET	
2	60	41003843	*SERIAL BAR CODE LABEL 569*2004001/01	569*2004001/01	2	PCS	
2	70	36031556	A1 *FUNCTION PRESSBUTTON 291*K140810/104D	291*K140810/104D	2	PCS	V0701112A
			与纯银前壳配套使用				
2	71	36023712	A1 FUNCTION PRESS BUTTON 291*K140810/101D	291*K140810/101D	2	PCS	V0701112A
			与电镀银前壳配套使用				
2	80	36031555	A2 *POWER BUTTON 292*K140810/103D	292*K140810/103D	1	PCS	V0701112A
			与纯银前壳配套使用				
2	81	36023713	A2 POWER BUTTON 292*K140810/101D	292*K140810/101D	1	PCS	V0701112A
			与电镀银前壳配套使用				
2	90	36031557	A3 *LENS 263*K140810/103D	263*K140810/103D	1	PCS	V0701112A
			与纯银前壳配套使用				
2	91	36023710	A3 263*K140810/100D-121	263*K140810/100D	1	PCS	V0701112A
			与电镀银前壳配套使用				
2	100	36003210	*WIRE TIE 680*101261-01R	680*101261-01R	3	PCS	
			1 SPEAKER LINE-1				
			2 DY LINE-1				
			3 CONNECTING LINE-1				
2	110	36023711	*LENS 263*K140820/101J	263*K140820/101J	1	PCS	
2	160	39012883	*POLYFOAM (UP) 300*K140810/00	300*K140810/00	1	PCS	
2	170	39012884	*POLYFOAM (DOWN) 300*K140820/00	300*K140820/00	1	PCS	
2	210	36025334	*STUD 250*T2563E11/100G	250*T2563E11/100G	1	PCS	
			1 CIRCUIT BOARD BOTTOM				
2	250	37000425	*SWITCH SPRING 477*212802-01	477*212802-01	1	PCS	

2	260	37000441	*CRT SPRING 477*371601-01	477*371601-01	1	PCS
2	270	36004141	*FELT PAPER 531-150010-05	531-150010-05	8	PCS
2	280	41000086	*QC LABEL 569*018101-10	569*018101-10	1	PCS
2	300	38000197	*TAPPING SCREW W-ST3×8-Zn-FT	612*300108-10	4	PCS
			2 FUNCTION PRESS	BUTTON-4		
2	320	38000218	*TAPPING SCREW W-ST3×10-Zn-C	612*300210-10	23	PCS
			1 LENS-1			
			2 FRONT CABINET-2			
			3 SPEAKER-8			
			5 KEY BOARD-4			
			7 POWER SWITCH-2			
			8 BRACKEY-4			
			9 AV BOARD-2			
2	S 330	36021313	BRACKET229*K147310/100C	229*K147310/100C	4	PCS
2	340	36031554	*PVC PLATE 388*K140810/103	388*K140810/103	1	PCS
2	350	36014984	*AC LINE CORE CLIP 254*000210/00-F	254*000210/00F	1	PCS
2	351	36000720	*BRACKET 229*371501-01 T3731E1	229*371501-01	4	PCS
			1 CRT FIX			
2	360	38000190	*TAPPING SCREW B-ST4×25-O-FT-H	614*400425-00	2	PCS
			1 FRONT,BACK CABINET TOP			
2	361	38000174	*TAPPING SCREW B-ST4×20-O-FT-H	614*400420-00	2	PCS
			1 FRONT,BACK CABINET, BOTTOM			
2	362	38000098	*TAPPING SCREW P-ST3×12-Zn-C	610*300212-10	2	PCS
			1 BACK CABINET AV END			
2	370	36003213	*WIRE TIE 680*125503-01R	680*125503-01R	1	PCS
			1 POWER LINER			
2	390	36003216	*SEPARATE RING 680*392101-00	680*392101-00	1	PCS
			1 HIGH VOLTAGE LINER			
2	400	26000092	CRT CONNECTOR ZJ101802-0D1	ZJ*101802-0D1	1	PCS
			1 CRT接地线 (XS503)			
2	480	38000252	*TAPPING SCREW B-ST5×30-Zn-C-H	614*500330-10	4	PCS
			1 CRT FIX			
2	490	37000403	*WIRE CLIP 451*701201-01	451*701201-01	2	PCS
			1 SPEAKER LINER			
2	520	28000094	*SHRINK PLASTIC SLEEVEΦ3.5-125℃BLA/U.C	079*403500-00	0,1	M
			1 喇叭线固定 (或 FIXED	SPEAKER LINE)		
2	540	36022688	* PLATE384*T29SK06810/01	384*T29SK06810/01	1	PCS
2	560	26000383	TWO-PIN CONNECTOR 02-2T01/T00-487(280)	02-2T01/T00-487	1	PCS
			1 XS204->L SP 红 “+”			
2	570	26004354	TWO-PIN CONNECTOR 02-2T01/T00-360	02-2T01/T00-360	1	PCS
			1 XS203->R SP 红 “+”			
2	580	29000871	SPEAKER YDT310N-4B-16Ω/3W		2	PCS
2	590	38000081	*TAPPING SCREW P-ST3×10-Zn-FT-H 优	610*300110-10	2	PCS

		2		电源导光柱-2					
2	600	36034473		PLATE384*K14SA208A10/00		384*K14SA208A10/00	1	PCS	
2	620	36032463		BACK CABINET 202*K140712/101B		202*K140712/101B	1	PCS	
2	630	K14SA208AZZ-04	0	K14SA208A ASSEMBLY PARTS SPECICAL			1	SET	
3	S 10	31003336	A	*CRT-37SX110Y22-DC15(A)-X-01-CAIHONG/A			1	PCS	
		1		B+=108V					
3	11	31003335	A	*CRT-37SX110Y22-DC15(A)-B-02-CAIHONG/A			1	PCS	
3	12	31003334	A	CRT-37SX110Y22-DC15(A)-A-03-CAIHONG/A			1	PCS	
3	13	31003337	A	*CRT-37SX110Y22-DC15(A)-Y-04-CAIHONG/A			1	PCS	
3	S 20	12001175		*DEGAUSSING COILBKK37B-40T4D0.44-1065/A			1	PCS	
		1		TO/XS902					
3	30	26000314		FOUR-PIN CONNECTOR 11-4T04/T00-410		11-4T04/T00-410	1	PCS	
		1		DY线					
3	50	36006216		*WASHER KK8.942.010-Φ8.2×Φ22×2.3		530*220082/23	4	PCS	
2	640	K14SA208AZZ-18	0	K14SA208A ASSEMBLY PARTS SPECICAL			1	SET	
3	S 10	31001872	B	*CRT-A34AGT13X63-01CHUNGHWA/#AU			1	PCS	
		1		B+=110V					
3	11	31002018	B	*CRT-A34AGT13X63N-04CHUNGHWA/#AU			1	PCS	
3	S 20	12001175		*DEGAUSSING COILBKK37B-40T4D0.44-1065/A			1	PCS	
		1		TO/XS902					
3	30	26000314		FOUR-PIN CONNECTOR 11-4T04/T00-410		11-4T04/T00-410	1	PCS	
		1		DY线					
3	40	36006216		*WASHER KK8.942.010-Φ8.2×Φ22×2.3		530*220082/23	4	PCS	
2	650	K14SA208AZZ-03	0	K14SA208A ASSEMBLY PARTS SPECICAL			1	SET	
3	10	31000892	A1	*CRT-A34JQQ90X94-01-BEIJING MATSUSHITA			1	PCS	
		1		B+=108V					
3	11	31003073	A1	*CRT-A34JQQ90X94-04	BEIJING MATSUSHITA		1	PCS	
3	12	31003102	A1	*CRT-A34JQQ90X94-02-	BEIJING MATSUSHITA		1	PCS	
3	13	31003072	A1	CRT-A34JQQ90X94-03	BEIJING MATSUSHITA		1	PCS	
3	20	12001175		*DEGAUSSING COILBKK37B-40T4D0.44-1065/A			1	PCS	
		1		TO/XS902					
3	40	26000314		FOUR-PIN CONNECTOR 11-4T04/T00-410		11-4T04/T00-410	1	PCS	
		1		D.Y线					
3	60	36006216		*WASHER KK8.942.010-Φ8.2×Φ22×2.3		530*220082/23	4	PCS	
2	660	K14SA208AZZ-KK	AA	K14SA208ASSEMBLY PARTS SPECICAL MATERIAL			1	SET	V0611211A
3	10	37002522		*NAME PLATE 401*DT13810/01		401*DT13810/01	1	PCS	
3	20	39020469		*CARTON BOX 510*K14SA208A10/01		510*K14SA208A10/01	1	PCS	
3	30	36032276		*MODEL PLATE 412*K14SA208A10/01		412*K14SA208A10/01	1	PCS	
3	40	39020543		*MANUAL 570*K14SA208A/01		570*K14SA208A/01	1	PCS	
3	50	39000255		*POLYBAG 310*280-K180-0.04/2		310*280-K180-0.04	1	PCS	
		1		FOR MANUAL PACKING					
3	60	39005395		PACKING BAG310*800-K800-0.04/4		310*800-K800-0.04	1	PCS	
		1		TV SET PACKING					

3	70	36031552	FRONT CABINET 200*K140810/109A	200*K140810/109A	1	PCS	V0701112A
2	670	K14SA208AZZ-RU	AA K14SA208A ASSEMBLY PARTS GENERAL		1	SET	V0611211A
3	10	39022305	WARRANTY CARD 901*157010/01-ELENBERG	901*157010/01	1	PCS	V0611343A
3	20	39022214	CARTON BOX 510*140310/01-ELENBERG	510*140310/01	1	PCS	
3	30	39022215	MANUAL570*1403/01-ELENBERG二合一	570*1403/01	1	PCS	
3	40	37011010	NAME PLATE 401*15寸Elenberg10/02	401*15寸ELENBERG10	1	PCS	
3	50	33000365	BATTERY RO3P-AAA-10.2X44.5 1.5V		2	PCS	
3	60	39000255	*POLYBAG 310*280-K180-0.04/2	310*280-K180-0.04	1	PCS	
3	70	39005395	PACKING BAG310*800-K800-0.04/4	310*800-K800-0.04	1	PCS	
3	80	41001864	*SERIAL LABEL 569*380501-06	569*380501-06	4	PCS	V0612413A-G
打印康佳串号贴于保修卡上							
3	90	36031552	FRONT CABINET 200*K140810/109A	200*K140810/109A	1	PCS	V0701112A
2	680	K14SA208AZZ-AE	AA K14SA208A ASSEMBLY PARTS GENERAL		1	SET	V0701112A
3	10	36037030	FRONT CABINET 200*K140810/115A-121	200*K140810/115A	1	PCS	
3	20	36037031	*MODEL PLATE 412*DELUX1410/03-ONIDA	412*DELUX1410/03	1	PCS	
3	30	39022812	*CARTON BOX 510*DELUX1410/06-ONIDA	510*DELUX1410/06	1	PCS	
3	40	37008877	*NAME PLATE 401*21寸ONIDA10/01	401*21寸ONIDA10/01	1	PCS	
3	50	39022853	*MANUAL 570*DELUX14/04-英文ONIDA	570*DELUX14/04	1	PCS	
3	60	39017212	*WARRANTY CARD 901*FLATDELUX2110/01-ON	901*FLATDELUX2110	1	PCS	
3	70	33000365	BATTERY RO3P-AAA-10.2X44.5 1.5V		2	PCS	
1	30	T5428D1FL-00	T5428D1 T5429D1 CONSUMERABLE PARTS		1	SET	
2	10	40000016	*RED SCREW LOCKING AGENT A231 1can=1kg/# 800-110002-01		0,3	G	
1 显像管螺母							
2	20	40000017	*BLACK ADHESIVE FOR PLASTIC 33B 1can=1kg/#	800-120001-04	1	G	
1 点固喇叭,网罩等							
2	30	40000075	*HOT MELT ADHESIVE WITH MELTING POINT AT 85°C 1bottle=30 1box=25kg	800*130001-01	4,5	G	
1 封埋光耦等							
2	40	40000012	T5428D1 T5429D1 CONSUMERABLE PARTS	800-190001-01	0,3	G	
ADHESIVES KE45-W WHITE 1bottle=100g/#							
1 遥控晶振-0.2							
2 CRT板地线插头-0.1							
2	50	40000011	*ONE COMPONENT RTV SILICON ADHESIVE KQ3109-M V0 GREY 1bottle=100g	800*190002-02	1	G	
1 电源部分大电容 DVD机芯输出连接器和连接线							
2	60	40000013	*HEAT SINK SILIXON GREASE G746 INSULATED 1can=1kg/#	800-190003-01	0,5	G	
1 散热片							
2	70	40000022	NITRYL LACQUER 1barrel=4liter	800*100001-00	0,2	G	
1 固定加速极,聚焦极电 位旋钮							
2	80	40000030	*STATIONARY TAPES WITH 12mm WIDTH 1roll=27m	806*002712-01	0,2	M	

					1	包装遥控							
					2	说明书							
					3	电源线							
2		90	40001090	A1	*KONKA PACKAGING TAPES WITH 60mm WIDTH OPACITY 1roll=1000m					1,6	M	V0209177A	
					1	封装电视机							
2		91	40001280	A1	*KONKA PACKAGING TAPES WITH 60mm WIDTH OPACITY 1roll=500m 外销机和 OEM 机专用					1,6	M	V0209177A	
2		92	40001089	A1	*KONKA PACKAGING TAPES WITH 60mm WIDTH OPACITY 1roll=45m					1,6	M	V0508454A	
2		120	40000981		*DAMPPROOF INSULATED SILICON GREASE 1CAN=1KG					0,6	G	V0108224A	
					1	显像管扣高压帽处	CRT管座聚焦极焊接端下						
2		130	40001069		*CLEANE SHENZHEN LONGTAI 302# 1CAN=20L					0	L	V0110191A	
					1	主板（信号、电源板）	清洗						
2		140	40000026	A2	*CASSETTE DOOR TAPE 3M810 MILK WHITE 3M 1roll=32m/#		801-003234-01			0,2	M	GV0302005A	
					1	平面直角面壳四角转角	各0.05米						
2		150	40001240	A2	*保护胶纸SONY浅蓝色T4082S一卷50米18mm REMOTE HANDSET KK-Y294F					0,2	M	GV0302005A	
1	E	40	KK-Y294F							1	SET		
2	E	10	22000730	A2	*QUARTZ CRYSTALHC-49U/S-3.64MHZ-日晖 Z701					1	PCS	V0605009A-AW	
2		11	20000982	A2	*CERAMIC RESONATOR ZTA3.64MG					1	PCS	V0605009A-AW	
2		20	17000063		*TRANSISTOR 2SC2001-130~270 优		031*232001-00			1	PCS		
					1	V701							
2		30	19005269		*CHIP IC SC7502BSOP20-杭州士兰 N701					1	PCS		
2		40	13001487		*CARBON FILM RESIS. RT13-1/6W2.2ΩJ/ R701		013*229005-12			1	PCS		
2		50	35009168		P.C.B 090*Y29401/00-T/A		090*Y29401/00			1	PCS		
					安全件								
2		60	14004214		*AXIAL LEADED CERAMIC CAP. UP050CH470J-B-BZ-TAIYANGYOUDIAN/#H					2	PCS		
					1	C702							
					2	C703							
2		70	14002041		*SUBMINIATURE ELEC.CAP. CD11C-16V226M/0507V		127*226047-61V			1	PCS	GV060406A-AA	
					1	C701							
2		80	16002210	AA	*IR EMITTING DIODE 优					1	PCS		
					1	VD701							
2		81	16000334	AA	*IR EMITTING DIODE 优		130*600101-00			1	PCS		
					HIR305B-LUCID-Φ5-20-940								

2	100	36030200	*REMOTE CONTROLLER BOTTOM CABINET	203*000610/110D	1	PCS	
2	110	36030201	*BATTERY BOX COVER 210*000610/101D	210*000610/101D	1	PCS	
2	120	36031611	*CONDUCTIVE RUBBER BUTTON 334*000610/10	334*000610/103	1	PCS	
2	130	36031612	*REMOTE CONTROLLER NAME PLATE BADGE	411*000610/103	1	PCS	
2	140	37004982	*SPRING 472*000111/100	472*000111/100	1	PCS	V0611490A
2	150	37004981	*SPRING 472*000121/100	472*000121/100	1	PCS	V0611490A
2	160	37002750	*BATTERY CONTACT SPRING 472*990230/00	472*990230/00	1	PCS	
2	170	39004881	POLYBAG 310*282-K76-0.04/2	310*282-K76-0.04/2	1	PCS	
2	180	38000059	*TAPPING SCREW P-ST2.6×8-O-FT	610*260108-00	1	PCS	
2	190	41000119	*QUALITY APPROVED LABEL 569*330201-03	569*330201-03	1	PCS	
2	200	36031610	A1 遥控器面壳201*000610/113D-183!银白	201*000610/113D	1	PCS	V0603121A
2	210	36032258	A1 遥控器面壳201*000610/125D-183!银白SEVEN ONLY FOR SEVEN PARTS	201*000610/125D	1	PCS	V0603121A
2	220	36034669	A1 *遥控器面壳201*000610/153D-183!银白POLAR ONLY FOR POLAR PARTS	201*000610/153D	1	PCS	V0608191A
2	230	36035244	A1 *遥控器面壳201*000610/161D-183!银白SMART ONLY FOR SMART PARTS	201*000610/161D	1	PCS	V0609327A
2	240	36036166	A1 遥控面壳201*000610/177D-183!银白ELENBERG ONLY FOR ELENBERG EXPORT	201*000610/177D	1	PCS	V0611317A
2	250	36037085	A1 遥控器面壳201*000610/192D-183!银白ONIDA ONLY FOR ONIDA EXPORT	201*000610/192D	1	PCS	V0701113A

Short Spare Parts List ELENBERG 1403 (K14SA208A)

Part Model	Part Name	Quantity
19003790	IC STR-W6753-TO220	
19004903	IC LA4268-SANYO	
19002979	IC HCF4052BEY-DIP16-ST	
19003471	IC LA78040-SANYO	
19003783	IC M24C08-WBN6-ST	
19000695	HS817B (G) -VISHAY	
19005741	IC CKP1510S-DIOP64-LA76936N-SANYO	
17001911	TRANSISTOR TT2140LS-SANYO	
17000065	TRANSISTOR 2SC2482	
17000284	TRANSISTOR 2SC4544-TOSHIBA	
17001211	TRANSISTOR 3DG2655	
32001099	TUNER ETA-SF03/12	
30001412	FLYBACK TRANSFORMER	
27001317	FUSE RT1-20-2.5A-250V/A	
KK-Y294F	REMOTE HANDSET KK-Y294F	

SHORT BOM ELENBERG 1403 (K14SA208A)

1	10	K14SA208ASKD-00	K14SA208A CHASSIS ASSEMBLY GENERAL		1	SET
1	20	K14SA208AZZ-00	K14SA208A ASSEMBLY PARTS GENERAL		1	SET
2	60	41003843	*SERIAL BAR CODE LABEL 569*2004001/01	569*2004001/01	2	PCS
2	70	36031556	A1 *FUNCTION PRESSBUTTON 291*K140810/104D	291*K140810/104D	2	PCS V0701112A
			与纯银前壳配套使用			
2	71	36023712	A1 FUNCTION PRESS BUTTON 291*K140810/101D	291*K140810/101D	2	PCS V0701112A
			与电镀银前壳配套使用			
2	80	36031555	A2 *POWER BUTTON 292*K140810/103D	292*K140810/103D	1	PCS V0701112A
			与纯银前壳配套使用			
2	81	36023713	A2 POWER BUTTON 292*K140810/101D	292*K140810/101D	1	PCS V0701112A
			与电镀银前壳配套使用			
2	90	36031557	A3 *LENS 263*K140810/103D	263*K140810/103D	1	PCS V0701112A
			与纯银前壳配套使用			
2	91	36023710	A3 263*K140810/100D-121	263*K140810/100D	1	PCS V0701112A
			与电镀银前壳配套使用			
2	100	36003210	*WIRE TIE 680*101261-01R	680*101261-01R	3	PCS
			1 SPEAKER LINE-1			
			2 DY LINE-1			
			3 CONNECTING LINE-1			
2	110	36023711	*LENS 263*K140820/101J	263*K140820/101J	1	PCS
2	160	39012883	*POLYFOAM (UP) 300*K140810/00	300*K140810/00	1	PCS
2	170	39012884	*POLYFOAM (DOWN) 300*K140820/00	300*K140820/00	1	PCS
2	210	36025334	*STUD 250*T2563E11/100G	250*T2563E11/100G	1	PCS
			1 CIRCUIT BOARD BOTTOM			
2	250	37000425	*SWITCH SPRING 477*212802-01	477*212802-01	1	PCS
2	260	37000441	*CRT SPRING 477*371601-01	477*371601-01	1	PCS
2	270	36004141	*FELT PAPER 531-150010-05	531-150010-05	8	PCS
2	280	41000086	*QC LABEL 569*018101-10	569*018101-10	1	PCS
2	300	38000197	*TAPPING SCREW W-ST3×8-Zn-FT	612*300108-10	4	PCS
			2 FUNCTION PRESS	BUTTON-4		
2	320	38000218	*TAPPING SCREW W-ST3×10-Zn-C	612*300210-10	23	PCS
			1 LENS-1			
			2 FRONT CABINET-2			
			3 SPEAKER-8			
			5 KEY BOARD-4			
			7 POWER SWITCH-2			
			8 BRACKEY-4			
			9 AV BOARD-2			
2	S 330	36021313	BRACKET229*K147310/100C	229*K147310/100C	4	PCS
2	340	36031554	*PVC PLATE 388*K140810/103	388*K140810/103	1	PCS

2		350	36014984		*AC LINE CORE CLIP 254*000210/00-F	254*000210/00F	1	PCS
2		351	36000720		*BRACKET 229*371501-01 T3731E1	229*371501-01	4	PCS
				1	CRT FIX			
2		360	38000190		*TAPPING SCREW B-ST4×25-O-FT-H	614*400425-00	2	PCS
				1	FRONT,BACK CABINET TOP			
2		361	38000174		*TAPPING SCREW B-ST4×20-O-FT-H	614*400420-00	2	PCS
				1	FRONT,BACK CABINET, BOTTOM			
2		362	38000098		*TAPPING SCREW P-ST3×12-Zn-C	610*300212-10	2	PCS
				1	BACK CABINET AV END			
2		370	36003213		*WIRE TIE 680*125503-01R	680*125503-01R	1	PCS
				1	POWER LINER			
2		390	36003216		*SEPARATE RING 680*392101-00	680*392101-00	1	PCS
				1	HIGH VOLTAGE LINER			
2		400	26000092		CRT CONNECTOR ZJ101802-0D1	ZJ*101802-0D1	1	PCS
				1	CRT接地线 (XS503)			
2		480	38000252		*TAPPING SCREW B-ST5×30-Zn-C-H	614*500330-10	4	PCS
				1	CRT FIX			
2		490	37000403		*WIRE CLIP 451*701201-01	451*701201-01	2	PCS
				1	SPEAKER LINER			
2		520	28000094		*SHRINK PLASTIC SLEEVEΦ3.5-125℃BLA/U.C	079*403500-00	0,1	M
				1	喇叭线固定 (或 FIXED	SPEAKER LINE)		
2		540	36022688		* PLATE384*T29SK06810/01	384*T29SK06810/01	1	PCS
2		560	26000383		TWO-PIN CONNECTOR 02-2T01/T00-487(280)	02-2T01/T00-487	1	PCS
				1	XS204->L SP 红“+”			
2		570	26004354		TWO-PIN CONNECTOR 02-2T01/T00-360	02-2T01/T00-360	1	PCS
				1	XS203->R SP 红“+”			
2		580	29000871		SPEAKER YDT310N-4B-16Ω/3W		2	PCS
2		590	38000081		*TAPPING SCREW P-ST3×10-Zn-FT-H 优	610*300110-10	2	PCS
				2	电源导光柱-2			
2		600	36034473		PLATE384*K14SA208A10/00	384*K14SA208A10/00	1	PCS
2		620	36032463		BACK CABINET 202*K140712/101B	202*K140712/101B	1	PCS
2		630	K14SA208AZZ-04	0	K14SA208A ASSEMBLY PARTS SPECICAL		1	SET
3	S	10	31003336	A	*CRT-37SX110Y22-DC15(A)-X-01-CAIHONG/A		1	PCS
				1	B+=108V			
3		11	31003335	A	*CRT-37SX110Y22-DC15(A)-B-02-CAIHONG/A		1	PCS
3		12	31003334	A	CRT-37SX110Y22-DC15(A)-A-03-CAIHONG/A		1	PCS
3		13	31003337	A	*CRT-37SX110Y22-DC15(A)-Y-04-CAIHONG/A		1	PCS
3	S	20	12001175		*DEGAUSSING COILBKK37B-40T4D0.44-1065/A		1	PCS
				1	TO/XS902			
3		30	26000314		FOUR-PIN CONNECTOR 11-4T04/T00-410	11-4T04/T00-410	1	PCS
				1	DY线			
3		50	36006216		*WASHER KK8.942.010-Φ8.2×Φ22×2.3	530*220082/23	4	PCS
2		670	K14SA208AZZ-RU	AA	K14SA208A ASSEMBLY PARTS GENERAL		1	SET V0611211A

3	10	39022305	WARRANTY CARD 901*157010/01-ELENBERG	901*157010/01	1	PCS	V0611343A
3	20	39022214	CARTON BOX 510*140310/01-ELENBERG	510*140310/01	1	PCS	
3	30	39022215	MANUAL570*1403/01-ELENBERG二合一	570*1403/01	1	PCS	
3	40	37011010	NAME PLATE 401*15寸Elenberg10/02	401*15寸ELENBERG10	1	PCS	
3	50	33000365	BATTERY RO3P-AAA-10.2X44.5 1.5V		2	PCS	
3	60	39000255	*POLYBAG 310*280-K180-0.04/2	310*280-K180-0.04	1	PCS	
3	70	39005395	PACKING BAG310*800-K800-0.04/4	310*800-K800-0.04	1	PCS	
3	80	41001864	*SERIAL LABEL 569*380501-06	569*380501-06	4	PCS	V0612413A-G
			打印康佳串号贴于保修卡上				
3	90	36031552	FRONT CABINET 200*K140810/109A	200*K140810/109A	1	PCS	V0701112A
1	30	T5428D1FL-00	T5428D1 T5429D1 CONSUMERABLE PARTS		1	SET	
1	E 40	KK-Y294F	REMOTE HANDSET KK-Y294F		1	SET	